

# nm23-H7 antibody

**Cat. No. GTX129626**

<b>Host</b>	Rabbit
<b>Clonality</b>	Polyclonal
<b>Isotype</b>	IgG
<b>Application</b>	WB
<b>Reactivity</b>	Human

**Package**  
100 µl, 25 µl

## APPLICATION

### Application Note

\*Optimal dilutions/concentrations should be determined by the researcher.

Suggested dilution	Recommended dilution
WB	1:500-1:3000

Not tested in other applications.

## PROPERTIES

<b>Form</b>	Liquid
<b>Buffer</b>	0.1M Tris, 0.1M Glycine, 20% Glycerol
<b>Preservative</b>	0.01% Thimerosal
<b>Storage</b>	Store as concentrated solution. Centrifuge briefly prior to opening vial. For short-term storage (1-2 weeks), store at 4°C. For long-term storage, aliquot and store at -20°C or below. Avoid multiple freeze-thaw cycles.
<b>Concentration</b>	1.08 mg/ml (Please refer to the vial label for the specific concentration.)
<b>Immunogen</b>	The immunogen used to generate this antibody corresponds to mouse nm23-H7.
<b>Purification</b>	Purified by antigen-affinity chromatography.
<b>Conjugation</b>	Unconjugated

### Note

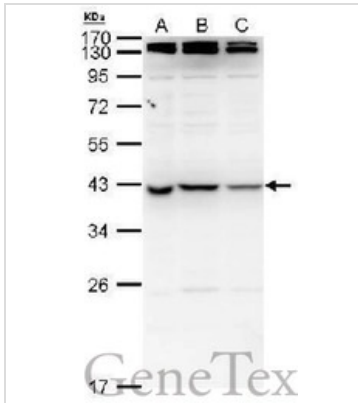
For laboratory research use only. Not for any clinical, therapeutic, or diagnostic use in humans or animals. Not for animal or human consumption.

Purchasers shall not, and agree not to enable third parties to, analyze, copy, reverse engineer or otherwise attempt to determine the structure or sequence of the product.



For full product information, images and publications, please visit our [website](#).

## DATA IMAGES



### GTX129626 WB Image

Nucleoside diphosphate kinase 7 antibody detects nucleoside diphosphate kinase 7 protein by Western blot analysis.

A. 20 µg human embryonic stem cell whole cell lysate/extract

B. 20 µg whole cell lysate/extract of human LUC shRNA-transfected human embryonic stem cells

C. 20 µg whole cell lysate/extract of human Nme7-1 shRNA-transfected human embryonic stem cells

10 % SDS-PAGE

Nucleoside diphosphate kinase 7 antibody (GTX129626) dilution: 1:3000



For full product information, images and publications, please visit our [website](https://www.genetex.com).