

C-Peptide antibody

Cat. No. GTX129708

Host	Rabbit
Clonality	Polyclonal
Isotype	IgG
Application	IHC-P, ELISA
Reactivity	Human, Mouse, Rat

Package
100 µl, 25 µl

APPLICATION

Application Note

*Optimal dilutions/concentrations should be determined by the researcher.

Suggested dilution	Recommended dilution
IHC-P	1:100-1:1000
ELISA	1:1000-1:10000

Not tested in other applications.

Calculated MW 12 kDa. ([Note](#))

PROPERTIES

Form	Liquid
Buffer	PBS, 20% Glycerol
Preservative	0.025% ProClin 300
Storage	Store as concentrated solution. Centrifuge briefly prior to opening vial. For short-term storage (1-2 weeks), store at 4°C. For long-term storage, aliquot and store at -20°C or below. Avoid multiple freeze-thaw cycles.
Concentration	1.5 mg/ml (Please refer to the vial label for the specific concentration.)
Immunogen	Carrier-protein conjugated synthetic peptide encompassing a sequence within the center region of human C-Peptide. The exact sequence is proprietary.
Purification	Purified by antigen-affinity chromatography.
Conjugation	Unconjugated

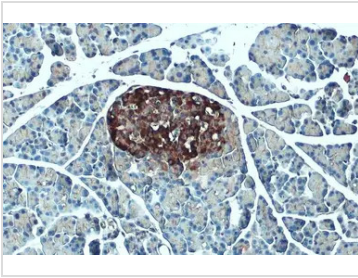
Note

For laboratory research use only. Not for any clinical, therapeutic, or diagnostic use in humans or animals. Not for animal or human consumption.

Purchasers shall not, and agree not to enable third parties to, analyze, copy, reverse engineer or otherwise attempt to determine the structure or sequence of the product.



For full product information, images and publications, please visit our [website](#).

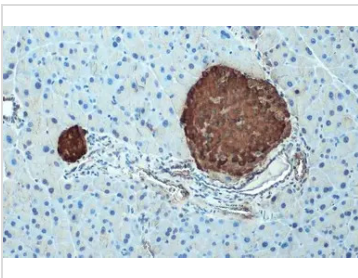
DATA IMAGES

GTX129708 IHC-P Image

C-Peptide antibody detects C-Peptide protein at cytoplasm by immunohistochemical analysis.

Sample: Paraffin-embedded rat pancreas.

C-Peptide stained by C-Peptide antibody (GTX129708) diluted at 1:1000.

Antigen Retrieval: Citrate buffer, pH 6.0, 15 min

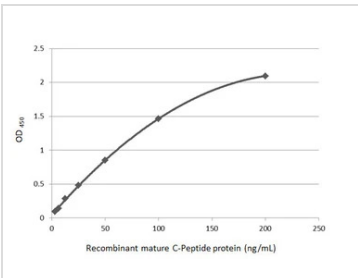

GTX129708 IHC-P Image

C-Peptide antibody detects C-Peptide protein at cytoplasm by immunohistochemical analysis.

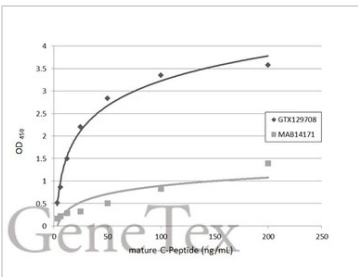
Sample: Paraffin-embedded mouse pancreas.

C-Peptide stained by C-Peptide antibody (GTX129708) diluted at 1:1000.

Antigen Retrieval: Citrate buffer, pH 6.0, 15 min


GTX129708 ELISA Image

Indirect ELISA analysis performed by coating plate with recombinant mature C-Peptide protein (200-3.125 ng/mL). Coated protein was probed with C-Peptide antibody (GTX129708) (0.5 µg/mL). Rabbit IgG antibody (HRP) (GTX213110-01) (1:10000) was used to detect bound primary antibody.


GTX129708 ELISA Image

Indirect ELISA analysis was performed by coating plate with 50 µL of mature C-Peptide protein at concentrations ranging from 3.125 ng/mL to 200 ng/mL. The coated protein is detected with C-Peptide antibody (GTX129708) or competitor's antibody (MAB14171) at 0.5 µg/mL. Rabbit IgG antibody (HRP) (GTX213110-01) was diluted at 1:10000 and used to detect the primary antibody.

*The competitor is not affiliated with GeneTex and does not endorse this product.



For full product information, images and publications, please visit our [website](https://www.genetex.com).