

GABARAP antibody

Cat. No. GTX129710

Host	Rabbit
Clonality	Polyclonal
Isotype	IgG
Applications	WB, ICC/IF
Reactivity	Human

References (1)

Package

100 µl, 25 µl

Applications

Application Note

*Optimal dilutions/concentrations should be determined by the researcher.

Suggested dilution	Recommended dilution
WB	1:500-1:10000
ICC/IF	1:100-1:1000

Not tested in other applications.

Calculated MW 14 kDa. ([Note](#))

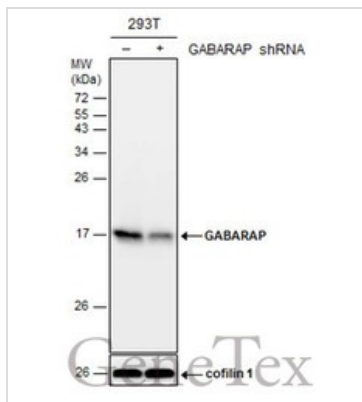
Properties

Form	Liquid
Buffer	PBS, 20% Glycerol
Preservative	0.025% ProClin 300
Storage	Store as concentrated solution. Centrifuge briefly prior to opening vial. For short-term storage (1-2 weeks), store at 4°C. For long-term storage, aliquot and store at -20°C or below. Avoid multiple freeze-thaw cycles.
Concentration	1 mg/ml (Please refer to the vial label for the specific concentration.)
Immunogen	Carrier-protein conjugated synthetic peptide encompassing a sequence within the N-terminus region of human GABARAP. The exact sequence is proprietary.
Purification	Purified by antigen-affinity chromatography.
Conjugation	Unconjugated
Note	For laboratory research use only. Not for any clinical, therapeutic, or diagnostic use in humans or animals. Not for animal or human consumption. Purchasers shall not, and agree not to enable third parties to, analyze, copy, reverse engineer or otherwise attempt to determine the structure or sequence of the product.



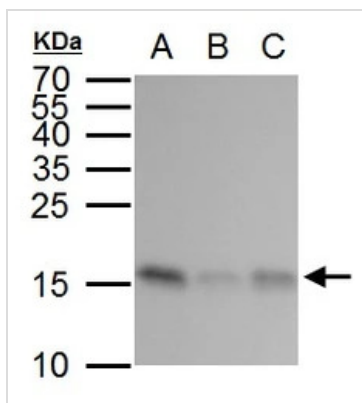
For full product information, images and publications, please visit our [website](#).

DATA IMAGES



GTX129710 WB Image

Non-transfected (-) and transfected (+) 293T whole cell extracts (30 µg) were separated by 15% SDS-PAGE, and the membrane was blotted with GABARAP antibody (GTX129710) diluted at 1:1000.



GTX129710 WB Image

GABARAP antibody detects GABARAP protein by western blot analysis.

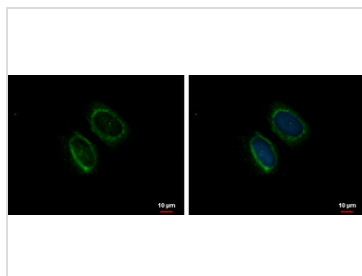
A. 30 µg 293T whole cell lysate/extract

B. 30 µg A431 whole cell lysate/extract

C. 30 µg HeLa whole cell lysate/extract

15 % SDS-PAGE

GABARAP antibody (GTX129710) dilution: 1:2000



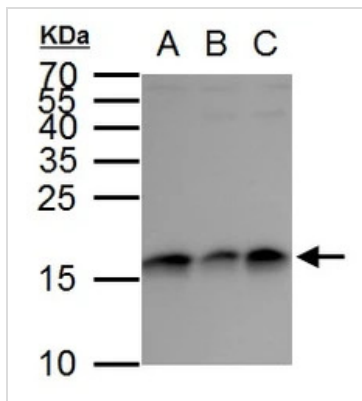
GTX129710 ICC/IF Image

GABARAP antibody detects GABARAP protein at cytoplasm by immunofluorescent analysis.

Sample: U2OS cells were fixed in ice-cold MeOH for 5 min.

Green: GABARAP protein stained by GABARAP antibody (GTX129710) diluted at 1:500.

Blue: Hoechst 33342 staining.



GTX129710 WB Image

GABARAP antibody detects GABARAP protein by western blot analysis.

A. 30 µg Jurkat whole cell lysate/extract

B. 30 µg Raji whole cell lysate/extract

C. 30 µg NCI-H929 whole cell lysate/extract

15 % SDS-PAGE

GABARAP antibody (GTX129710) dilution: 1:2000



For full product information, images and publications, please visit our [website](http://www.genetex.com).