

Histone H3K27me3 (Tri-methyl Lys27) antibody

Cat. No. GTX129774

Host	Rabbit
Clonality	Polyclonal
Isotype	IgG
Application	WB, ICC/IF, IHC-P
Reactivity	Human, Mouse

Package
100 µl, 25 µl

APPLICATION

Application Note

*Optimal dilutions/concentrations should be determined by the researcher.

Suggested dilution	Recommended dilution
WB	1:500-1:3000
ICC/IF	1:100-1:1000
IHC-P	1:100-1:1000

Not tested in other applications.

PROPERTIES

Form	Liquid
Buffer	PBS, 1% BSA, 20% Glycerol
Preservative	0.025% ProClin 300
Storage	Store as concentrated solution. Centrifuge briefly prior to opening vial. For short-term storage (1-2 weeks), store at 4°C. For long-term storage, aliquot and store at -20°C or below. Avoid multiple freeze-thaw cycles.
Concentration	1 mg/ml (Please refer to the vial label for the specific concentration.)
Immunogen	Carrier-protein conjugated synthetic peptide surrounding tri-methyl Lys27 of human Histone H3. The exact sequence is proprietary.
Purification	Purified by antigen-affinity chromatography.
Conjugation	Unconjugated

Note

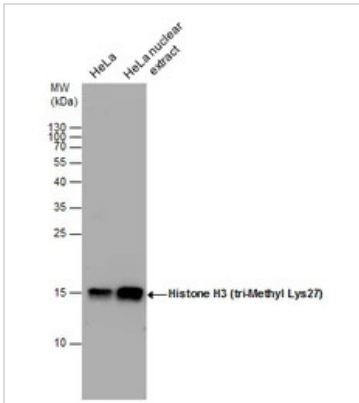
For laboratory research use only. Not for any clinical, therapeutic, or diagnostic use in humans or animals. Not for animal or human consumption.

Purchasers shall not, and agree not to enable third parties to, analyze, copy, reverse engineer or otherwise attempt to determine the structure or sequence of the product.



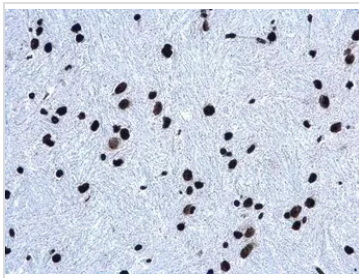
For full product information, images and publications, please visit our [website](#).

DATA IMAGES



GTX129774 WB Image

Histone H3 (tri-Methyl Lys27) antibody detects Histone H3 (tri-Methyl Lys27) protein by western blot analysis. HeLa whole cell extracts and nuclear extracts (30 µg) were separated by 15% SDS-PAGE, and the membrane was blotted with Histone H3 (tri-Methyl Lys27) antibody (GTX129774) diluted by 1:1000.



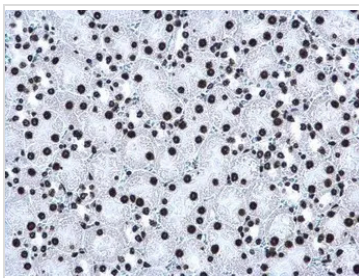
GTX129774 IHC-P Image

Histone H3 (tri-Methyl Lys27) antibody detects Histone H3 (tri-Methyl Lys27) protein at nucleus on mouse kidney by immunohistochemical analysis.

Sample: Paraffin-embedded mouse kidney.

Histone H3 (tri-Methyl Lys27) antibody (GTX129774) diluted at 1:500.

Antigen Retrieval: Trilogy™ (EDTA based, pH 8.0) buffer, 15min



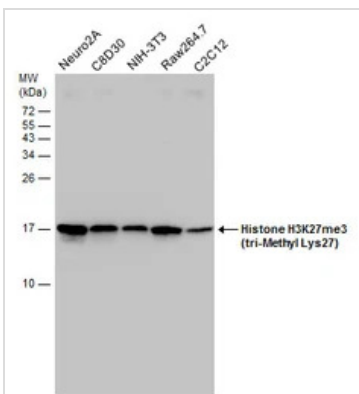
GTX129774 IHC-P Image

Histone H3 (tri-Methyl Lys27) antibody detects Histone H3 (tri-Methyl Lys27) protein at nucleus on mouse kidney by immunohistochemical analysis.

Sample: Paraffin-embedded mouse kidney.

Histone H3 (tri-Methyl Lys27) antibody (GTX129774) diluted at 1:500.

Antigen Retrieval: Trilogy™ (EDTA based, pH 8.0) buffer, 15min



GTX129774 WB Image

Various whole cell extracts (30 µg) were separated by 15% SDS-PAGE, and the membrane was blotted with Histone H3K27me3 (tri-Methyl Lys27) antibody (GTX129774) diluted at 1:1000.



For full product information, images and publications, please visit our [website](https://www.genetex.com).