

NOL8 antibody

Cat. No. GTX129790

Host	Rabbit
Clonality	Polyclonal
Isotype	IgG
Applications	WB, IP
Reactivity	Human

Package
100 µl, 25 µl

Applications

Application Note

*Optimal dilutions/concentrations should be determined by the researcher.

Suggested dilution	Recommended dilution
WB	1:500-1:3000
IP	1:100-1:500

Not tested in other applications.

Calculated MW 132 kDa. ([Note](#))

Properties

Form	Liquid
Buffer	PBS, 20% Glycerol
Preservative	0.025% ProClin 300
Storage	Store as concentrated solution. Centrifuge briefly prior to opening vial. For short-term storage (1-2 weeks), store at 4°C. For long-term storage, aliquot and store at -20°C or below. Avoid multiple freeze-thaw cycles.
Concentration	1 mg/ml (Please refer to the vial label for the specific concentration.)
Immunogen	Recombinant protein encompassing a sequence within the N-terminus region of human NOL8. The exact sequence is proprietary.
Purification	Purified by antigen-affinity chromatography.
Conjugation	Unconjugated

Note

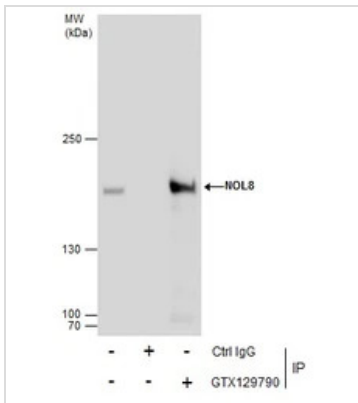
For laboratory research use only. Not for any clinical, therapeutic, or diagnostic use in humans or animals. Not for animal or human consumption.

Purchasers shall not, and agree not to enable third parties to, analyze, copy, reverse engineer or otherwise attempt to determine the structure or sequence of the product.



For full product information, images and publications, please visit our [website](#).

DATA IMAGES

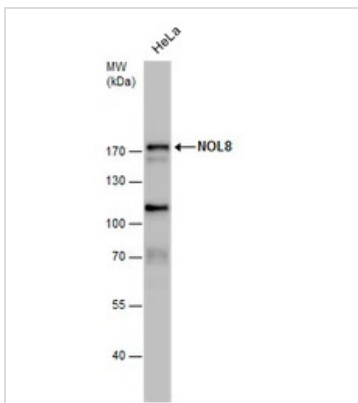


GTX129790 IP Image

Immunoprecipitation of NOL8 protein from HeLa whole cell extracts using 5 µg of NOL8 antibody (GTX129790).

Western blot analysis was performed using NOL8 antibody (GTX129790).

EasyBlot anti-Rabbit IgG (GTX221666-01) was used as a secondary reagent.



GTX129790 WB Image

NOL8 antibody detects NOL8 protein by western blot analysis. Whole cell extracts (30 µg) was separated by 7.5 % SDS-PAGE, and blotted with NOL8 antibody (GTX129790) diluted by 1:1000



For full product information, images and publications, please visit our [website](https://www.genetex.com).