

## Transcription Termination Factor 1 antibody

Cat. No. GTX129804

<b>Host</b>	Rabbit
<b>Clonality</b>	Polyclonal
<b>Isotype</b>	IgG
<b>Applications</b>	WB, IHC-P, IP
<b>Reactivity</b>	Human

**Package**  
100 µl, 25 µl

## Applications

## Application Note

\*Optimal dilutions/concentrations should be determined by the researcher.

Suggested dilution	Recommended dilution
WB	1:500-1:3000
IHC-P	1:100-1:1000
IP	1:100-1:500

Not tested in other applications.

**Calculated MW** 103 kDa. ([Note](#))

## Properties

<b>Form</b>	Liquid
<b>Buffer</b>	PBS, 20% Glycerol
<b>Preservative</b>	0.025% ProClin 300
<b>Storage</b>	Store as concentrated solution. Centrifuge briefly prior to opening vial. For short-term storage (1-2 weeks), store at 4°C. For long-term storage, aliquot and store at -20°C or below. Avoid multiple freeze-thaw cycles.
<b>Concentration</b>	1 mg/ml (Please refer to the vial label for the specific concentration.)
<b>Immunogen</b>	Recombinant protein encompassing a sequence within the center region of human Transcription Termination Factor 1. The exact sequence is proprietary.
<b>Purification</b>	Purified by antigen-affinity chromatography.
<b>Conjugation</b>	Unconjugated

## Note

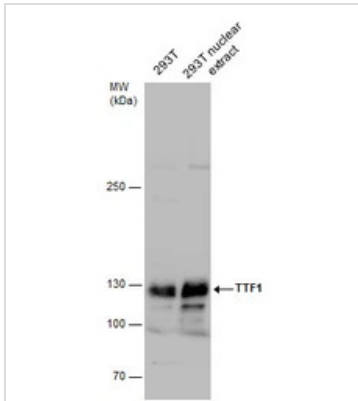
For laboratory research use only. Not for any clinical, therapeutic, or diagnostic use in humans or animals. Not for animal or human consumption.

Purchasers shall not, and agree not to enable third parties to, analyze, copy, reverse engineer or otherwise attempt to determine the structure or sequence of the product.



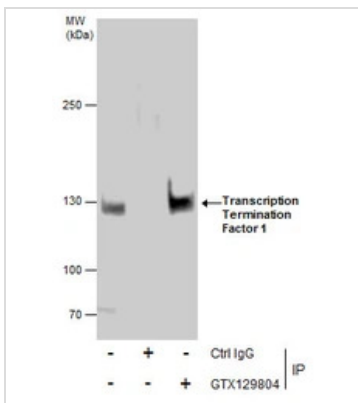
For full product information, images and publications, please visit our [website](#).

## DATA IMAGES



### GTx129804 WB Image

TTF1 antibody detects TTF1 protein by western blot analysis. 293T whole cell extracts and nuclear extracts (30 µg) were separated by 5% SDS-PAGE, and the membrane was blotted with TTF1 antibody (GTx129804) diluted by 1:1000 and developed with Trident femto Western HRP Substrate (GTx14698).

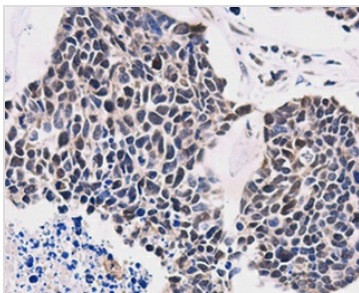


### GTx129804 IP Image

Immunoprecipitation of Transcription Termination Factor 1 protein from 293T whole cell extracts using 5 µg of Transcription Termination Factor 1 antibody (GTx129804).

Western blot analysis was performed using Transcription Termination Factor 1 antibody (GTx129804) diluted at 1:500.

EasyBlot anti-Rabbit IgG (GTx221666-01) was used as a secondary reagent.



### GTx129804 IHC-P Image

Transcription Termination Factor 1 antibody detects Transcription Termination Factor 1 protein at nucleus in human small cell lung cancer by immunohistochemical analysis.

Sample: Paraffin-embedded human small cell lung cancer.

Transcription Termination Factor 1 antibody (GTx129804) diluted at 1:500.

Antigen Retrieval: Citrate buffer, pH 6.0, 15 min



For full product information, images and publications, please visit our [website](https://www.genetex.com).