

## GATA6 antibody

**Cat. No. GTX129832**

|                     |            |
|---------------------|------------|
| <b>Host</b>         | Rabbit     |
| <b>Clonality</b>    | Polyclonal |
| <b>Isotype</b>      | IgG        |
| <b>Applications</b> | WB         |
| <b>Reactivity</b>   | Human      |

**Package**  
100 µl, 25 µl

## Applications

**Application Note**

\*Optimal dilutions/concentrations should be determined by the researcher.

| Suggested dilution | Recommended dilution |
|--------------------|----------------------|
| WB                 | 1:500-1:3000         |

Not tested in other applications.

**Calculated MW** 60 kDa. ([Note](#))

## Properties

|                      |  |
|----------------------|--|
| <b>Form</b>          | Liquid   |
| <b>Buffer</b>        | PBS, 20% Glycerol  |
| <b>Preservative</b>  | 0.025% ProClin 300   |
| <b>Storage</b>       | Store as concentrated solution. Centrifuge briefly prior to opening vial. For short-term storage (1-2 weeks), store at 4°C. For long-term storage, aliquot and store at -20°C or below. Avoid multiple freeze-thaw cycles. |
| <b>Concentration</b> | 1 mg/ml (Please refer to the vial label for the specific concentration.)   |
| <b>Immunogen</b>     | Carrier-protein conjugated synthetic peptide encompassing a sequence within the C-terminus region of human GATA6. The exact sequence is proprietary.   |
| <b>Purification</b>  | Purified by antigen-affinity chromatography.   |
| <b>Conjugation</b>   | Unconjugated   |

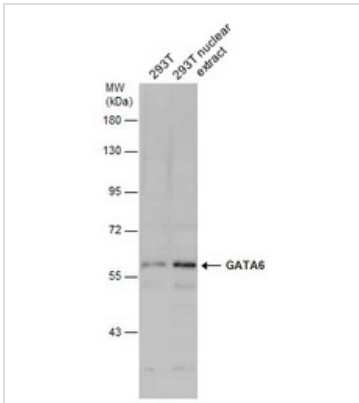
**Note** For laboratory research use only. Not for any clinical, therapeutic, or diagnostic use in humans or animals. Not for animal or human consumption.

Purchasers shall not, and agree not to enable third parties to, analyze, copy, reverse engineer or otherwise attempt to determine the structure or sequence of the product.



For full product information, images and publications, please visit our [website](#).

## DATA IMAGES

**GTX129832 WB Image**

293T whole cell and nuclear extracts (30  $\mu$ g) were separated by 7.5% SDS-PAGE, and the membrane was blotted with GATA6 antibody (GTX129832) diluted at 1:1000.



For full product information, images and publications, please visit our [website](#).