

SMAD3 (phospho Ser423/425) antibody

Cat. No. GTX129841

Host	Rabbit
Clonality	Polyclonal
Isotype	IgG
Application	WB
Reactivity	Human, Mouse

Reference (2)

★★★★★ Review (1)

Package

100 µl, 25 µl

APPLICATION

Application Note

*Optimal dilutions/concentrations should be determined by the researcher.

Suggested dilution	Recommended dilution
WB	1:500-1:3000
Not tested in other applications.	

Calculated MW 48 kDa. ([Note](#))

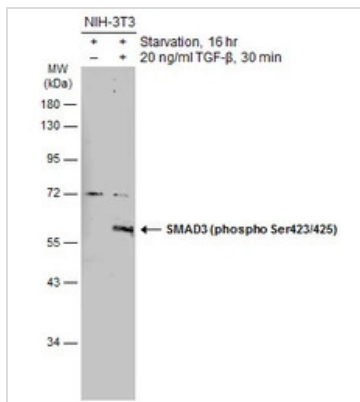
PROPERTIES

Form	Liquid
Buffer	PBS, 1% BSA, 20% Glycerol
Preservative	0.025% ProClin 300
Storage	Store as concentrated solution. Centrifuge briefly prior to opening vial. For short-term storage (1-2 weeks), store at 4°C. For long-term storage, aliquot and store at -20°C or below. Avoid multiple freeze-thaw cycles.
Concentration	1 mg/ml (Please refer to the vial label for the specific concentration.)
Immunogen	Carrier-protein conjugated synthetic peptide surrounding phospho Ser423/Ser425 of human SMAD3. The exact sequence is proprietary.
Purification	Purified by antigen-affinity chromatography.
Conjugation	Unconjugated
Note	For laboratory research use only. Not for any clinical, therapeutic, or diagnostic use in humans or animals. Not for animal or human consumption.
	Purchasers shall not, and agree not to enable third parties to, analyze, copy, reverse engineer or otherwise attempt to determine the structure or sequence of the product.



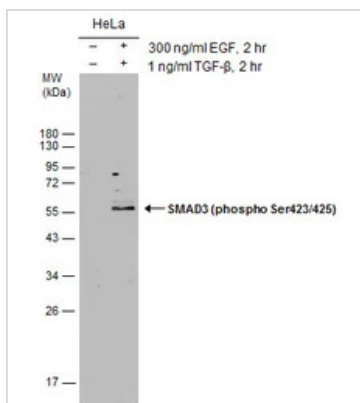
For full product information, images and publications, please visit our [website](#).

DATA IMAGES



GTX129841 WB Image

Untreated (–) and treated (+) NIH-3T3 whole cell extracts (30 μ g) were separated by 10% SDS-PAGE, and the membrane was blotted with SMAD3 (phospho Ser423/425) antibody (GTX129841) diluted at 1:500. The HRP-conjugated anti-rabbit IgG antibody (GTX213110-01) was used to detect the primary antibody.



GTX129841 WB Image

Untreated (–) and treated (+) HeLa whole cell extracts (30 μ g) were separated by 12% SDS-PAGE, and the membrane was blotted with SMAD3 (phospho Ser423/425) antibody (GTX129841) diluted at 1:500.



For full product information, images and publications, please visit our [website](https://www.genetex.com).