

## c-Fos antibody

**Cat. No. GTX129846**

<b>Host</b>	Rabbit
<b>Clonality</b>	Polyclonal
<b>Isotype</b>	IgG
<b>Applications</b>	WB, ICC/IF
<b>Reactivity</b>	Human, Mouse, Rat

References ( 17 )

Package

100 µl, 25 µl

## Applications

**Application Note**

\*Optimal dilutions/concentrations should be determined by the researcher.

Suggested dilution	Recommended dilution
WB	1:500-1:3000
ICC/IF	1:100-1:1000

Not tested in other applications.

**Calculated MW** 41 kDa. ( [Note](#) )

## Properties

<b>Form</b>	Liquid
<b>Buffer</b>	PBS, 1% BSA, 20% Glycerol
<b>Preservative</b>	0.025% ProClin 300
<b>Storage</b>	Store as concentrated solution. Centrifuge briefly prior to opening vial. For short-term storage (1-2 weeks), store at 4°C. For long-term storage, aliquot and store at -20°C or below. Avoid multiple freeze-thaw cycles.
<b>Concentration</b>	0.1 mg/ml (Please refer to the vial label for the specific concentration.)
<b>Immunogen</b>	Carrier-protein conjugated synthetic peptide encompassing a sequence within the N-terminus region of human c-Fos. The exact sequence is proprietary.
<b>Purification</b>	Purified by antigen-affinity chromatography.
<b>Conjugation</b>	Unconjugated

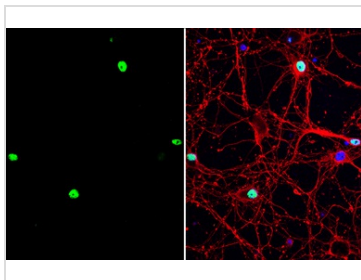
**Note**

For laboratory research use only. Not for any clinical, therapeutic, or diagnostic use in humans or animals. Not for animal or human consumption.

Purchasers shall not, and agree not to enable third parties to, analyze, copy, reverse engineer or otherwise attempt to determine the structure or sequence of the product.

For full product information, images and publications, please visit our [website](#).

## DATA IMAGES



### GTx129846 ICC/IF Image

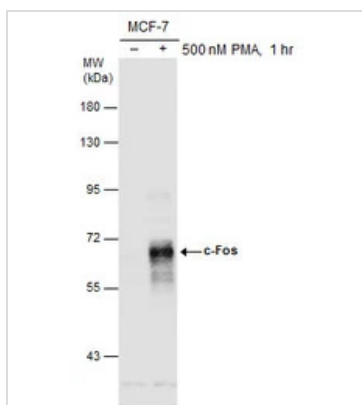
c-Fos antibody detects c-Fos protein by immunofluorescent analysis.

Sample: DIV9 rat E18 primary cortical neuron cells were fixed in 4% paraformaldehyde at RT for 15 min.

Green: c-Fos stained by c-Fos antibody (GTx129846) diluted at 1:500.

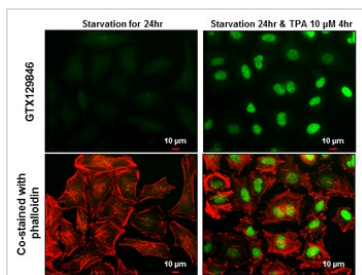
Red: beta Tubulin 3/ Tuj1, stained by beta Tubulin 3/ Tuj1 antibody [GT11710] (GTx631836) diluted at 1:500.

Blue: Fluoroshield with DAPI (GTx30920).



### GTx129846 WB Image

Untreated (–) and treated (+) MCF-7 whole cell extracts (30 µg) were separated by 7.5% SDS-PAGE, and the membrane was blotted with c-Fos antibody (GTx129846) diluted at 1:1000.



### GTx129846 ICC/IF Image

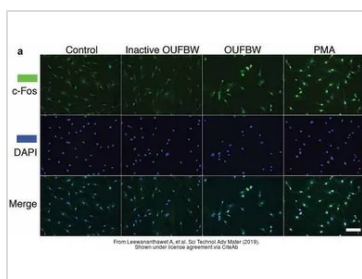
c-Fos antibody detects c-Fos protein at nucleus by immunofluorescent analysis.

Sample: HeLa cells were fixed in 4% paraformaldehyde at RT for 15 min.

Green: c-Fos protein stained by c-Fos antibody (GTx129846) diluted at 1:500.

Red: phalloidin, a cytoskeleton marker, diluted at 1:50.

Scale bar = 10 µm.



### GTx129846 ICC/IF Image

The data was published in the journal Sci Technol Adv Mater in 2019. [PMID: 31258824](https://pubmed.ncbi.nlm.nih.gov/31258824/)



For full product information, images and publications, please visit our [website](https://www.genetex.com).