

SEC61B antibody

Cat. No. GTX129852

Host	Rabbit
Clonality	Polyclonal
Isotype	IgG
Applications	WB, IP
Reactivity	Human, Mouse

References (1)

Package

100 µl, 25 µl

Applications

Application Note

*Optimal dilutions/concentrations should be determined by the researcher.

Suggested dilution	Recommended dilution
WB	1:500-1:3000
IP	1:100-1:500

Not tested in other applications.

Calculated MW 10 kDa. ([Note](#))

Properties

Form	Liquid
Buffer	PBS, 20% Glycerol
Preservative	0.025% ProClin 300
Storage	Store as concentrated solution. Centrifuge briefly prior to opening vial. For short-term storage (1-2 weeks), store at 4°C. For long-term storage, aliquot and store at -20°C or below. Avoid multiple freeze-thaw cycles.
Concentration	0.77 mg/ml (Please refer to the vial label for the specific concentration.)
Immunogen	Carrier-protein conjugated synthetic peptide encompassing a sequence within the N-terminus region of human SEC61B. The exact sequence is proprietary.
Purification	Purified by antigen-affinity chromatography.
Conjugation	Unconjugated

Note

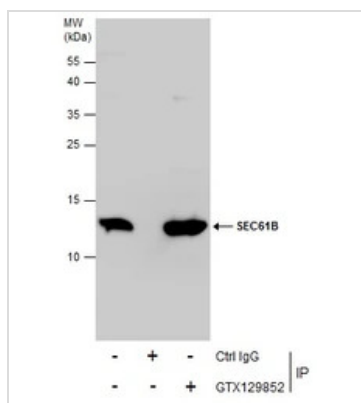
For laboratory research use only. Not for any clinical, therapeutic, or diagnostic use in humans or animals. Not for animal or human consumption.

Purchasers shall not, and agree not to enable third parties to, analyze, copy, reverse engineer or otherwise attempt to determine the structure or sequence of the product.



For full product information, images and publications, please visit our [website](#).

DATA IMAGES

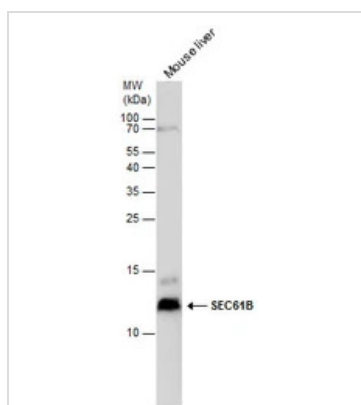


GTX129852 IP Image

Immunoprecipitation of SEC61B protein from HepG2 whole cell extracts using 5 µg of SEC61B antibody (GTX129852).

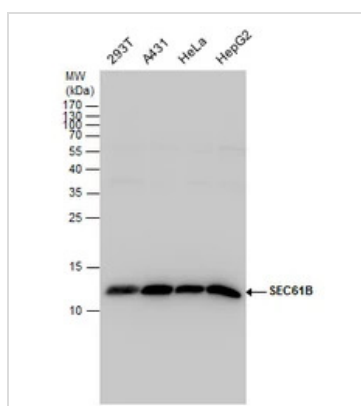
Western blot analysis was performed using SEC61B antibody (GTX129852).

EasyBlot anti-Rabbit IgG (GTX221666-01) was used as a secondary reagent.



GTX129852 WB Image

SEC61B antibody detects SEC61B protein by western blot analysis. Mouse tissue extracts (50 µg) was separated by 15 % SDS-PAGE, and the membrane was blotted with SEC61B antibody (GTX129852) at a dilution of 1:1000.



GTX129852 WB Image

SEC61B antibody detects SEC61B protein by western blot analysis. Various whole cell extracts (30 µg) were separated by 15% SDS-PAGE, and the membrane was blotted with SEC61B antibody (GTX129852) diluted at a dilution of 1:1000.



For full product information, images and publications, please visit our [website](https://www.genetex.com).