

# CDKN2A / p14ARF antibody

**Cat. No. GTX129902**

<b>Host</b>	Rabbit
<b>Clonality</b>	Polyclonal
<b>Isotype</b>	IgG
<b>Application</b>	WB, IHC-P, IP
<b>Reactivity</b>	Human

**Package**  
100 µl, 25 µl

## APPLICATION

### Application Note

\*Optimal dilutions/concentrations should be determined by the researcher.

Suggested dilution	Recommended dilution
WB	1:500-1:3000
IHC-P	1:100-1:1000
IP	1:100-1:500

Not tested in other applications.

**Calculated MW** 17 kDa. ( [Note](#) )

## PROPERTIES

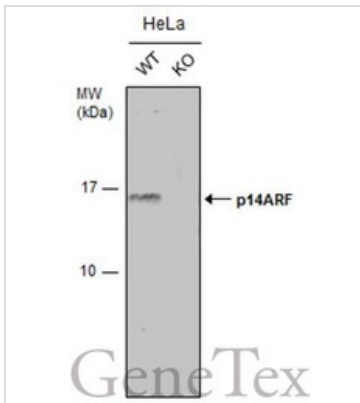
<b>Form</b>	Liquid
<b>Buffer</b>	PBS, 20% Glycerol
<b>Preservative</b>	0.025% ProClin 300
<b>Storage</b>	Store as concentrated solution. Centrifuge briefly prior to opening vial. For short-term storage (1-2 weeks), store at 4°C. For long-term storage, aliquot and store at -20°C or below. Avoid multiple freeze-thaw cycles.
<b>Concentration</b>	2.18 mg/ml (Please refer to the vial label for the specific concentration.)
<b>Immunogen</b>	Carrier-protein conjugated synthetic peptide encompassing a sequence within the C-terminus region of human CDKN2A / p14ARF. The exact sequence is proprietary.
<b>Purification</b>	Purified by antigen-affinity chromatography.
<b>Conjugation</b>	Unconjugated

**Note** For laboratory research use only. Not for any clinical, therapeutic, or diagnostic use in humans or animals. Not for animal or human consumption.

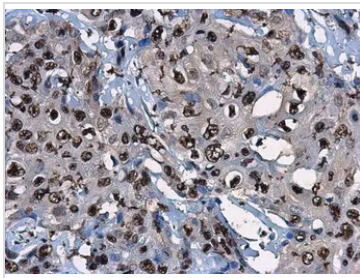
Purchasers shall not, and agree not to enable third parties to, analyze, copy, reverse engineer or otherwise attempt to determine the structure or sequence of the product.



For full product information, images and publications, please visit our [website](#).

**DATA IMAGES**

**GTx129902 WB Image**

Wild-type (WT) and p14ARF knockout (KO) HeLa cell extracts (30 µg) were separated by 15% SDS-PAGE, and the membrane was blotted with p14ARF antibody (GTx129902) diluted at 1:500. The HRP-conjugated anti-rabbit IgG antibody (GTx213110-01) was used to detect the primary antibody.


**GTx129902 IHC-P Image**

p14ARF antibody detects p14ARF protein at nucleus in human esophageal carcinoma by immunohistochemical analysis.

Sample: Paraffin-embedded human esophageal carcinoma.  
p14ARF antibody (GTx129902) diluted at 1:500.

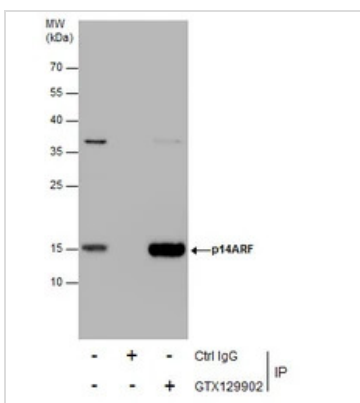
Antigen Retrieval: Citrate buffer, pH 6.0, 15 min


**GTx129902 IHC-P Image**

p14ARF antibody detects p14ARF protein at nucleus in human colon cancer by immunohistochemical analysis.

Sample: Paraffin-embedded human colon cancer.  
p14ARF antibody (GTx129902) diluted at 1:500.

Antigen Retrieval: Citrate buffer, pH 6.0, 15 min


**GTx129902 IP Image**

Immunoprecipitation of p14ARF protein from HeLa whole cell extracts using 5 µg of p14ARF antibody (GTx129902).

Western blot analysis was performed using p14ARF antibody (GTx129902).  
EasyBlot anti-Rabbit IgG (GTx221666-01) was used as a secondary reagent.



For full product information, images and publications, please visit our [website](https://www.genetex.com).