

CDKN2A / p14ARF antibody

Cat. No. GTX129903

Host	Rabbit
Clonality	Polyclonal
Isotype	IgG
Applications	WB, ICC/IF, IP
Reactivity	Human

References (1)

Package

100 µl, 25 µl

Applications

Application Note

*Optimal dilutions/concentrations should be determined by the researcher.

Suggested dilution	Recommended dilution
WB	1:500-1:3000
ICC/IF	1:100-1:1000
IP	1:100-1:500

Not tested in other applications.

Calculated MW 17 kDa. ([Note](#))

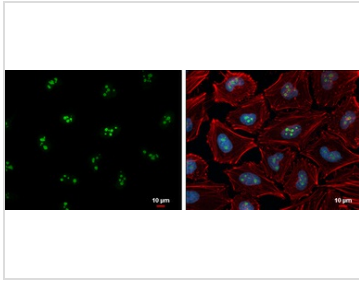
Properties

Form	Liquid
Buffer	PBS, 20% Glycerol
Preservative	0.025% ProClin 300
Storage	Store as concentrated solution. Centrifuge briefly prior to opening vial. For short-term storage (1-2 weeks), store at 4°C. For long-term storage, aliquot and store at -20°C or below. Avoid multiple freeze-thaw cycles.
Concentration	2.02 mg/ml (Please refer to the vial label for the specific concentration.)
Immunogen	Carrier-protein conjugated synthetic peptide encompassing a sequence within the center region of human CDKN2A / p14ARF. The exact sequence is proprietary.
Purification	Purified by antigen-affinity chromatography.
Conjugation	Unconjugated
Note	For laboratory research use only. Not for any clinical, therapeutic, or diagnostic use in humans or animals. Not for animal or human consumption. Purchasers shall not, and agree not to enable third parties to, analyze, copy, reverse engineer or otherwise attempt to determine the structure or sequence of the product.



For full product information, images and publications, please visit our [website](#).

DATA IMAGES

**GTX129903 ICC/IF Image**

p14ARF antibody detects p14ARF protein at nucleolus by immunofluorescent analysis.

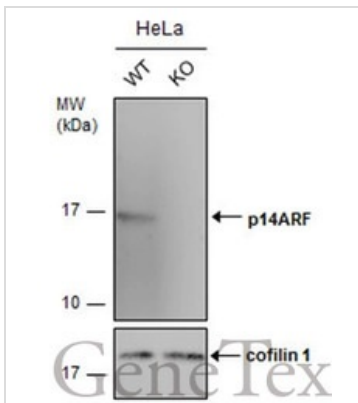
Sample: HeLa cells were fixed in 4% paraformaldehyde at RT for 15 min.

Green: p14ARF protein stained by p14ARF antibody (GTX129903) diluted at 1:500.

Red: Phalloidin, a cytoskeleton marker, diluted at 1:200.

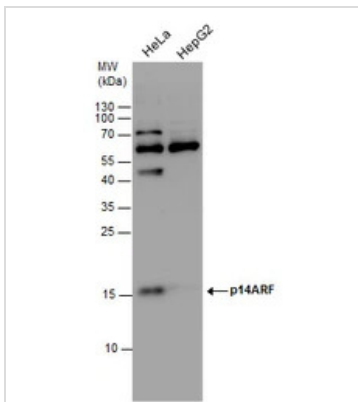
Blue: Hoechst 33342 staining.

Scale bar = 10 μm.

**GTX129903 WB Image**

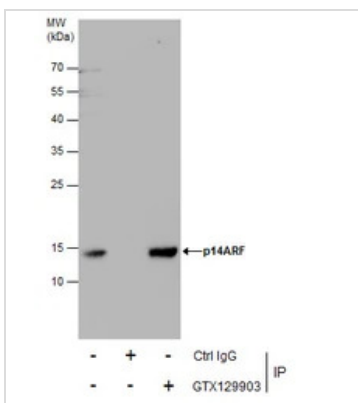
Wild-type (WT) and p14ARF knockout (KO) HeLa cell extracts (30 μg) were separated by 15% SDS-PAGE,

and the membrane was blotted with p14ARF antibody (GTX129903) diluted at 1:500. The HRP-conjugated anti-rabbit IgG antibody (GTX213110-01) was used to detect the primary antibody.

**GTX129903 WB Image**

p14ARF antibody detects p14ARF protein by western blot analysis. Whole cell extracts (30 μg) was

separated by 15% SDS-PAGE, and the membrane was blotted with p14ARF antibody (GTX129903) at a dilution of 1:1000. The HRP-conjugated anti-rabbit IgG antibody (GTX213110-01) was used to detect the primary antibody.

**GTX129903 IP Image**

Immunoprecipitation of p14ARF protein from HeLa whole cell extracts using 5 μg of p14ARF antibody (GTX129903).

Western blot analysis was performed using p14ARF antibody (GTX129903).

EasyBlot anti-Rabbit IgG (GTX221666-01) was used as a secondary reagent.



For full product information, images and publications, please visit our [website](#).