

beta Tubulin 3/ Tuj1 antibody

Cat. No. GTX129913

Host	Rabbit
Clonality	Polyclonal
Isotype	IgG
Applications	WB, ICC/IF, IHC-Fr
Reactivity	Human, Mouse, Rat

References (2)

★★★★☆☆ Review (1)

Package

100 µl, 25 µl

Applications

Application Note

*Optimal dilutions/concentrations should be determined by the researcher.

Suggested dilution	Recommended dilution
WB	1:5000-1:20000
ICC/IF	1:100-1:1000
IHC-Fr	1:100-1:1000

Not tested in other applications.

Calculated MW 50 kDa. ([Note](#))

Properties

Form	Liquid
Buffer	PBS, 20% Glycerol
Preservative	0.025% ProClin 300
Storage	Store as concentrated solution. Centrifuge briefly prior to opening vial. For short-term storage (1-2 weeks), store at 4°C. For long-term storage, aliquot and store at -20°C or below. Avoid multiple freeze-thaw cycles.
Concentration	0.17 mg/ml (Please refer to the vial label for the specific concentration.)
Immunogen	Carrier-protein conjugated synthetic peptide encompassing a sequence within the C-terminus region of human beta Tubulin 3/ Tuj1. The exact sequence is proprietary.
Purification	Purified by antigen-affinity chromatography.
Conjugation	Unconjugated

Note

For laboratory research use only. Not for any clinical, therapeutic, or diagnostic use in humans or animals. Not for animal or human consumption.

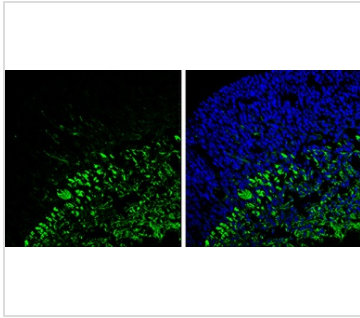
Purchasers shall not, and agree not to enable third parties to, analyze, copy, reverse engineer or otherwise attempt to determine the structure or sequence of the product.



For full product information, images and publications, please visit our [website](#).

Date 2025 / 06 / 14 Page 1 of 2

DATA IMAGES



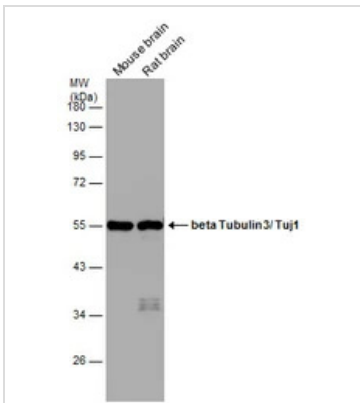
GTX129913 IHC-Fr Image

beta Tubulin 3/ TUJ1 antibody detects beta Tubulin 3/ TUJ1 protein expression by immunohistochemical analysis.

Sample: Frozen sectioned E13.5 Rat brain.

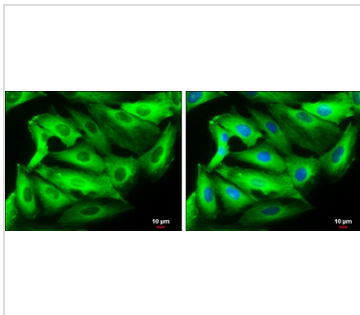
Green: beta Tubulin 3/ TUJ1 protein stained by beta Tubulin 3/ TUJ1 antibody (GTX129913) diluted at 1:250.

Blue: Fluoroshield with DAPI (GTX30920).



GTX129913 WB Image

Various tissue extracts (10 µg) were separated by 10% SDS-PAGE, and the membrane was blotted with beta Tubulin 3/ Tuj1 antibody (GTX129913) diluted at 1:10000.



GTX129913 ICC/IF Image

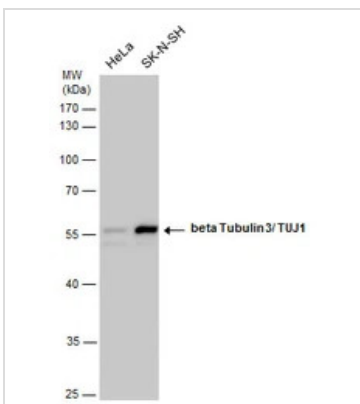
beta Tubulin 3/ Tuj1 antibody detects beta Tubulin 3/ Tuj1 protein at cytoskeleton by immunofluorescent analysis.

Sample: SK-N-SH cells were fixed in 4% paraformaldehyde at RT for 15 min.

Green: beta Tubulin 3/ Tuj1 protein stained by beta Tubulin 3/ Tuj1 antibody (GTX129913) diluted at 1:1000.

Blue: Hoechst 33342 staining.

Scale bar = 10 µm.



GTX129913 WB Image

beta Tubulin 3/ TUJ1 antibody detects beta Tubulin 3/ TUJ1 protein by western blot analysis. Various whole cell extracts (20 µg) were separated by 10% SDS-PAGE, and the membrane was blotted with beta Tubulin 3/ TUJ1 antibody (GTX129913) diluted at a dilution of 1:10000.



For full product information, images and publications, please visit our [website](https://www.genetex.com).