

TLE1 antibody

Cat. No. GTX129993

Host	Rabbit
Clonality	Polyclonal
Isotype	IgG
Application	WB, IHC-Fr, IP
Reactivity	Human, Mouse

Reference (1)
Package
100 µl, 25 µl

APPLICATION

Application Note

*Optimal dilutions/concentrations should be determined by the researcher.

Suggested dilution	Recommended dilution
WB	1:500-1:3000
IHC-Fr	1:100-1:1000
IP	1:100-1:500

Not tested in other applications.

Calculated MW 83 kDa. ([Note](#))

PROPERTIES

Form	Liquid
Buffer	PBS, 20% Glycerol
Preservative	0.025% ProClin 300
Storage	Store as concentrated solution. Centrifuge briefly prior to opening vial. For short-term storage (1-2 weeks), store at 4°C. For long-term storage, aliquot and store at -20°C or below. Avoid multiple freeze-thaw cycles.
Concentration	1.31 mg/ml (Please refer to the vial label for the specific concentration.)
Immunogen	Carrier-protein conjugated synthetic peptide encompassing a sequence within the N-terminus region of human TLE1. The exact sequence is proprietary.
Purification	Purified by antigen-affinity chromatography.
Conjugation	Unconjugated

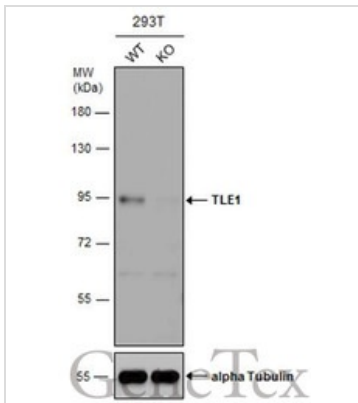
Note For laboratory research use only. Not for any clinical, therapeutic, or diagnostic use in humans or animals. Not for animal or human consumption.

Purchasers shall not, and agree not to enable third parties to, analyze, copy, reverse engineer or otherwise attempt to determine the structure or sequence of the product.



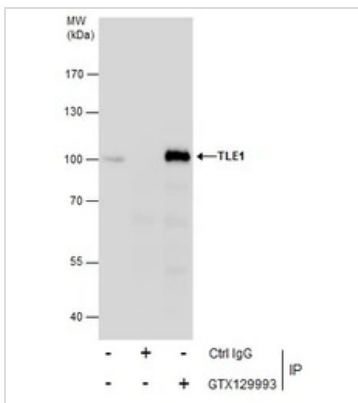
For full product information, images and publications, please visit our [website](#).

DATA IMAGES



GTX129993 WB Image

Wild-type (WT) and TLE1 knockout (KO) 293T cell extracts (30 μ g) were separated by 7.5% SDS-PAGE, and the membrane was blotted with TLE1 antibody (GTX129993) diluted at 1:1000. The HRP-conjugated anti-rabbit IgG antibody (GTX213110-01) was used to detect the primary antibody.

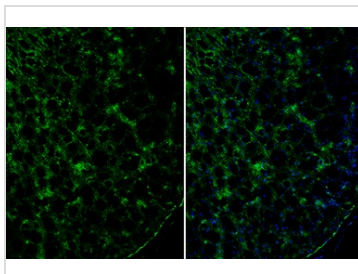


GTX129993 IP Image

Immunoprecipitation of TLE1 protein from 293T whole cell extracts using 5 μ g of TLE1 antibody (GTX129993).

Western blot analysis was performed using TLE1 antibody (GTX129993).

EasyBlot anti-Rabbit IgG (GTX221666-01) was used as a secondary reagent.



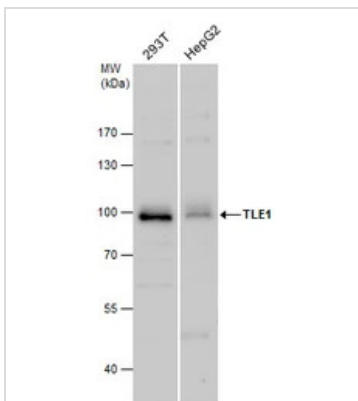
GTX129993 IHC-Fr Image

TLE1 antibody detects TLE1 protein by immunohistochemical analysis.

Sample: Frozen-sectioned mouse cerebral cortex.

Green: TLE1 stained by TLE1 antibody (GTX129993) diluted at 1:250.

Blue: Fluoroshield with DAPI (GTX30920).



GTX129993 WB Image

TLE1 antibody detects TLE1 protein by western blot analysis. Various whole cell extracts (30 μ g) were separated by 7.5% SDS-PAGE, and the membrane was blotted with TLE1 antibody (GTX129993) diluted at a dilution of 1:1000.



For full product information, images and publications, please visit our [website](https://www.genetex.com).