

GRK2 antibody

Cat. No. GTX130012

Host	Rabbit
Clonality	Polyclonal
Isotype	IgG
Application	WB, IP
Reactivity	Human

Package
100 µl, 25 µl

APPLICATION

Application Note

*Optimal dilutions/concentrations should be determined by the researcher.

Suggested dilution	Recommended dilution
WB	1:500-1:3000
IP	1:100-1:500

Not tested in other applications.

Calculated MW 80 kDa. ([Note](#))

PROPERTIES

Form	Liquid
Buffer	PBS, 1% BSA, 20% Glycerol
Preservative	0.025% ProClin 300
Storage	Store as concentrated solution. Centrifuge briefly prior to opening vial. For short-term storage (1-2 weeks), store at 4°C. For long-term storage, aliquot and store at -20°C or below. Avoid multiple freeze-thaw cycles.
Concentration	0.21 mg/ml (Please refer to the vial label for the specific concentration.)
Immunogen	Carrier-protein conjugated synthetic peptide encompassing a sequence within the C-terminus region of human GRK2. The exact sequence is proprietary.
Purification	Purified by antigen-affinity chromatography.
Conjugation	Unconjugated

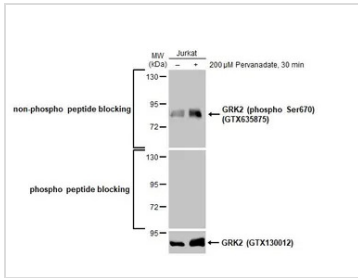
Note

For laboratory research use only. Not for any clinical, therapeutic, or diagnostic use in humans or animals. Not for animal or human consumption.

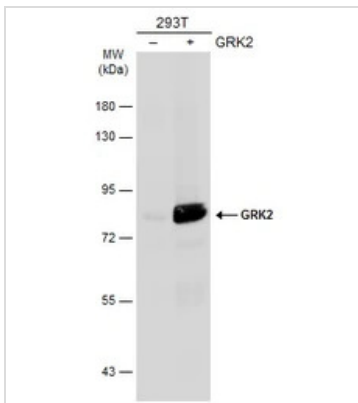
Purchasers shall not, and agree not to enable third parties to, analyze, copy, reverse engineer or otherwise attempt to determine the structure or sequence of the product.



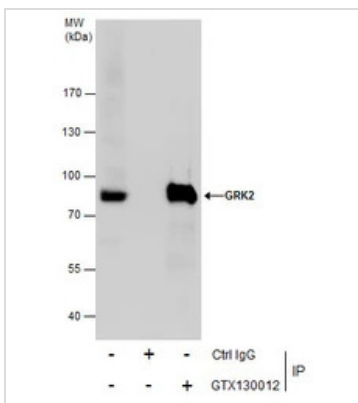
For full product information, images and publications, please visit our [website](#).

DATA IMAGES

GTX130012 WB Image

Untreated (–) and treated (+) Jurkat whole cell extracts (30 µg) were separated by 7.5% SDS-PAGE, and the membrane was blotted with GRK2 antibody (GTX130012) diluted at 1:1000. The HRP-conjugated anti-rabbit IgG antibody (GTX213110-01) was used to detect the primary antibody, and the signal was developed with Trident ECL plus-Enhanced.


GTX130012 WB Image

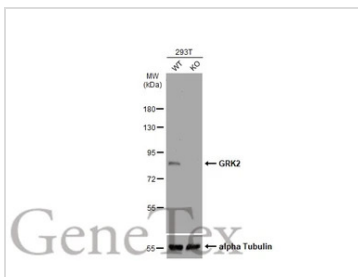
Non-transfected (–) and transfected (+) 293T whole cell extracts (30 µg) were separated by 7.5% SDS-PAGE, and the membrane was blotted with GRK2 antibody (GTX130012) diluted at 1:1000. The HRP-conjugated anti-rabbit IgG antibody (GTX213110-01) was used to detect the primary antibody.


GTX130012 IP Image

Immunoprecipitation of GRK2 protein from Jurkat whole cell extracts using 5 µg of GRK2 antibody (GTX130012).

Western blot analysis was performed using GRK2 antibody (GTX130012).

EasyBlot anti-Rabbit IgG (GTX221666-01) was used as a secondary reagent.


GTX130012 WB Image

Wild-type (WT) and GRK2 knockout (KO) 293T cell extracts (30 µg) were separated by 7.5% SDS-PAGE, and the membrane was blotted with GRK2 antibody (GTX130012) diluted at 1:1000. The HRP-conjugated anti-rabbit IgG antibody (GTX213110-01) was used to detect the primary antibody.



For full product information, images and publications, please visit our [website](https://www.genetex.com).