

## CSDA antibody

Cat. No. GTX130052

Host	Rabbit
Clonality	Polyclonal
Isotype	IgG
Applications	WB, ICC/IF, IHC-P
Reactivity	Human, Mouse, Rat

References ( 1 )

Package

100 µl, 25 µl

## Applications

## Application Note

\*Optimal dilutions/concentrations should be determined by the researcher.

Suggested dilution	Recommended dilution
WB	1:500-1:3000
ICC/IF	Assay dependent
IHC-P	Assay dependent

Not tested in other applications.

Calculated MW	40 kDa. ( <a href="#">Note</a> )
Observed MW (kDa)	40   48 kDa. The observed M.W. is based on the following publication. PMID: 26646932

## Properties

Form	Liquid
Buffer	PBS, 20% Glycerol
Preservative	0.025% ProClin 300
Storage	Store as concentrated solution. Centrifuge briefly prior to opening vial. For short-term storage (1-2 weeks), store at 4°C. For long-term storage, aliquot and store at -20°C or below. Avoid multiple freeze-thaw cycles.
Concentration	0.99 mg/ml (Please refer to the vial label for the specific concentration.)
Immunogen	Carrier-protein conjugated synthetic peptide encompassing a sequence within the C-terminus region of human CSDA. The exact sequence is proprietary.
Purification	Purified by antigen-affinity chromatography.
Conjugation	Unconjugated



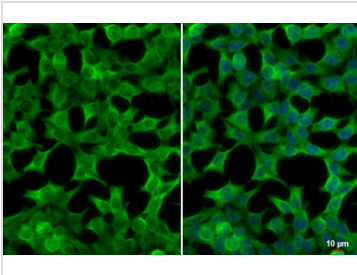
For full product information, images and publications, please visit our [website](#).

For laboratory research use only. Not for any clinical, therapeutic, or diagnostic use in humans or animals. Not for animal or human consumption.

## Note

Purchasers shall not, and agree not to enable third parties to, analyze, copy, reverse engineer or otherwise attempt to determine the structure or sequence of the product.

## DATA IMAGES



### GTX130052 ICC/IF Image

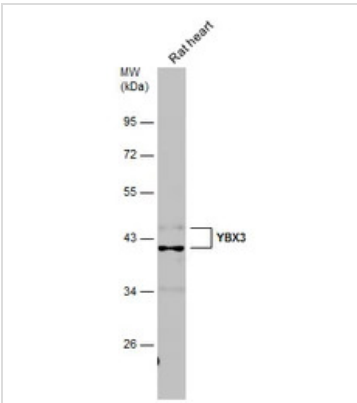
CSDA antibody detects CSDA protein at cytoplasm by immunofluorescent analysis.

Sample: HeLa cells were fixed in 4% paraformaldehyde at RT for 15 min.

Green: CSDA stained by CSDA antibody (GTX130052) diluted at 1:500.

Blue: Fluoroshield with DAPI (GTX30920).

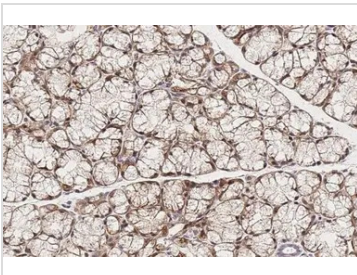
Scale bar= 10µm.



### GTX130052 WB Image

Rat tissue extract (50 µg) was separated by 10% SDS-PAGE, and the membrane was blotted with YBX3 antibody (GTX130052) diluted at 1:1000.

The observed M.W. is based on the publication: [PMID: 16603261](https://pubmed.ncbi.nlm.nih.gov/16603261/)



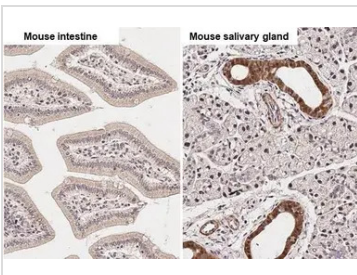
### GTX130052 IHC-P Image

CSDA antibody detects CSDA protein at cytoplasm and nucleus by immunohistochemical analysis.

Sample: Paraffin-embedded rat salivary gland.

CSDA stained by CSDA antibody (GTX130052) diluted at 1:500.

Antigen Retrieval: Citrate buffer, pH 6.0, 15 min



### GTX130052 IHC-P Image

CSDA antibody detects CSDA protein by immunohistochemical analysis.

Sample: Paraffin-embedded mouse tissues.

CSDA stained by CSDA antibody (GTX130052) diluted at 1:500.

Antigen Retrieval: Citrate buffer, pH 6.0, 15 min



For full product information, images and publications, please visit our [website](https://www.genetex.com).