

## alpha Internexin antibody

**Cat. No. GTX130053**

<b>Host</b>	Rabbit
<b>Clonality</b>	Polyclonal
<b>Isotype</b>	IgG
<b>Applications</b>	WB, ICC/IF
<b>Reactivity</b>	Mouse, Rat

References ( 1 )

Package

100 µl, 25 µl

## Applications

**Application Note**

\*Optimal dilutions/concentrations should be determined by the researcher.

Suggested dilution	Recommended dilution
WB	1:500-1:3000
ICC/IF	1:100-1:1000

Not tested in other applications.

**Calculated MW** 55 kDa. ( [Note](#) )

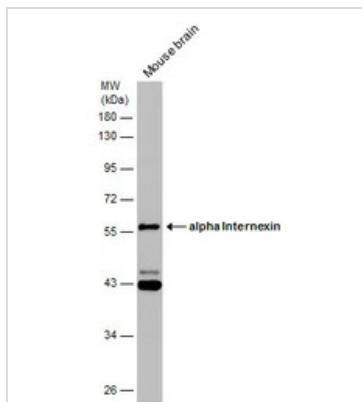
## Properties

<b>Form</b>	Liquid
<b>Buffer</b>	PBS, 20% Glycerol
<b>Preservative</b>	0.025% ProClin 300
<b>Storage</b>	Store as concentrated solution. Centrifuge briefly prior to opening vial. For short-term storage (1-2 weeks), store at 4°C. For long-term storage, aliquot and store at -20°C or below. Avoid multiple freeze-thaw cycles.
<b>Concentration</b>	0.66 mg/ml (Please refer to the vial label for the specific concentration.)
<b>Immunogen</b>	Carrier-protein conjugated synthetic peptide encompassing a sequence within the center region of human alpha Internexin. The exact sequence is proprietary.
<b>Purification</b>	Purified by antigen-affinity chromatography.
<b>Conjugation</b>	Unconjugated
<b>Note</b>	For laboratory research use only. Not for any clinical, therapeutic, or diagnostic use in humans or animals. Not for animal or human consumption.  Purchasers shall not, and agree not to enable third parties to, analyze, copy, reverse engineer or otherwise attempt to determine the structure or sequence of the product.



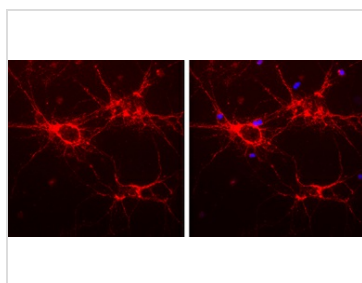
For full product information, images and publications, please visit our [website](#).

DATA IMAGES



**GTX130053 WB Image**

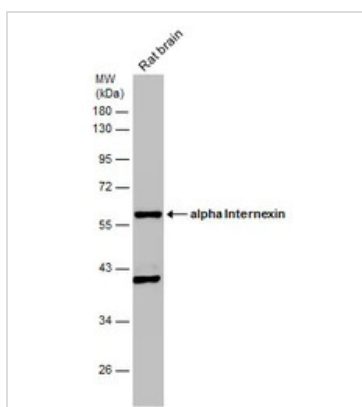
Mouse tissue extract (50 µg) was separated by 10% SDS-PAGE, and the membrane was blotted with alpha Internexin antibody (GTX130053) diluted at 1:1000.



**GTX130053 ICC/IF Image**

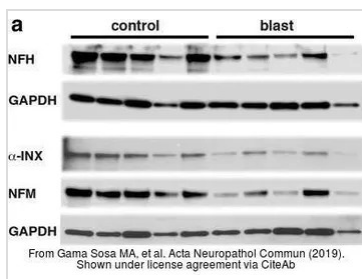
alpha Internexin antibody detects alpha Internexin protein expression by immunofluorescent analysis. Sample: Cultured rat E18 primary cortical neuron, DIV 8. Cells were fixed in 4% paraformaldehyde at RT for 15 min.

Red: alpha Internexin protein stained by alpha Internexin antibody (GTX130053) diluted at 1:250.  
Blue: Fluoroshield with DAPI (GTX30920).



**GTX130053 WB Image**

Rat tissue extract (50 µg) was separated by 10% SDS-PAGE, and the membrane was blotted with alpha Internexin antibody (GTX130053) diluted at 1:1000.



**GTX130053 WB Image**

The data was published in the journal Acta Neuropathol Commun in 2019. [PMID: 30626447](https://pubmed.ncbi.nlm.nih.gov/30626447/)



For full product information, images and publications, please visit our [website](https://www.genetex.com).