

Hamartin / TSC1 antibody

Cat. No. GTX130062

Host	Rabbit
Clonality	Polyclonal
Isotype	IgG
Application	WB, IHC-P, IP
Reactivity	Human, Mouse

 Review (2)Package
100 µl, 25 µl

APPLICATION

Application Note

*Optimal dilutions/concentrations should be determined by the researcher.

Suggested dilution	Recommended dilution
WB	1:500-1:3000
IHC-P	1:100-1:1000
IP	Assay dependent

Not tested in other applications.

Calculated MW 130 kDa. ([Note](#))

PROPERTIES

Form	Liquid
Buffer	PBS, 20% Glycerol
Preservative	0.025% ProClin 300
Storage	Store as concentrated solution. Centrifuge briefly prior to opening vial. For short-term storage (1-2 weeks), store at 4°C. For long-term storage, aliquot and store at -20°C or below. Avoid multiple freeze-thaw cycles.
Concentration	1.38 mg/ml (Please refer to the vial label for the specific concentration.)
Immunogen	Recombinant protein encompassing a sequence within the C-terminus region of human Hamartin / TSC1. The exact sequence is proprietary.
Purification	Purified by antigen-affinity chromatography.
Conjugation	Unconjugated

Note

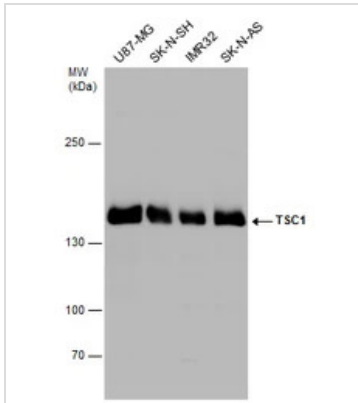
For laboratory research use only. Not for any clinical, therapeutic, or diagnostic use in humans or animals. Not for animal or human consumption.

Purchasers shall not, and agree not to enable third parties to, analyze, copy, reverse engineer or otherwise attempt to determine the structure or sequence of the product.



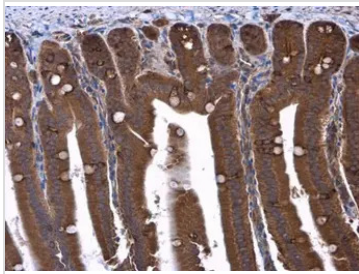
For full product information, images and publications, please visit our [website](#).

DATA IMAGES



GTX130062 WB Image

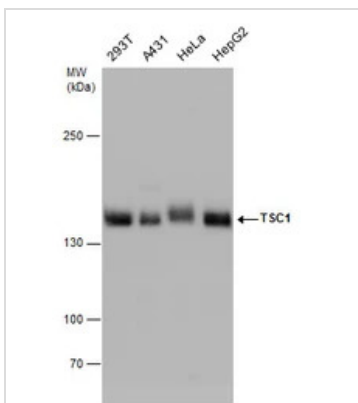
Various whole cell extracts (30 µg) were separated by 5% SDS-PAGE, and the membrane was blotted with TSC1 antibody (GTX130062) diluted at 1:1000.



GTX130062 IHC-P Image

TSC1 antibody detects TSC1 protein at cytoplasm in mouse duodenum by immunohistochemical analysis.
Sample: Paraffin-embedded mouse duodenum.
TSC1 antibody (GTX130062) diluted at 1:500.

Antigen Retrieval: Citrate buffer, pH 6.0, 15 min



GTX130062 WB Image

Various whole cell extracts (30 µg) were separated by 5% SDS-PAGE, and the membrane was blotted with TSC1 antibody (GTX130062) diluted at 1:1000.



For full product information, images and publications, please visit our [website](https://www.genetex.com).