

Bad antibody

Cat. No. GTX130108

Host	Rabbit
Clonality	Polyclonal
Isotype	IgG
Applications	WB, IHC-P
Reactivity	Human

References (8)

★★★★★ Review (1)

Package

100 µl, 25 µl

Applications

Application Note

*Optimal dilutions/concentrations should be determined by the researcher.

Suggested dilution	Recommended dilution
WB	1:500-1:3000
IHC-P	Assay dependent

Not tested in other applications.

Calculated MW 18 kDa. ([Note](#))

Properties

Form	Liquid
Buffer	PBS, 20% Glycerol
Preservative	0.025% ProClin 300
Storage	Store as concentrated solution. Centrifuge briefly prior to opening vial. For short-term storage (1-2 weeks), store at 4°C. For long-term storage, aliquot and store at -20°C or below. Avoid multiple freeze-thaw cycles.
Concentration	1.36 mg/ml (Please refer to the vial label for the specific concentration.)
Immunogen	Recombinant protein encompassing a sequence within the center region of human Bad. The exact sequence is proprietary.
Purification	Purified by antigen-affinity chromatography.
Conjugation	Unconjugated

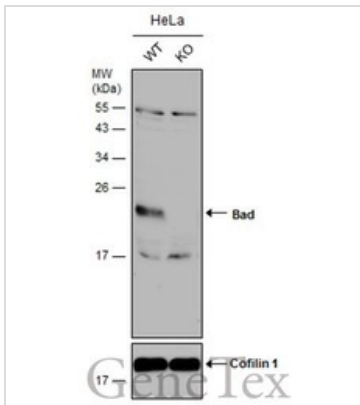
Note

For laboratory research use only. Not for any clinical, therapeutic, or diagnostic use in humans or animals. Not for animal or human consumption.

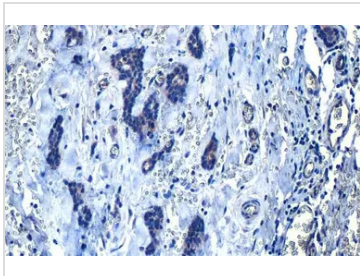
Purchasers shall not, and agree not to enable third parties to, analyze, copy, reverse engineer or otherwise attempt to determine the structure or sequence of the product.

For full product information, images and publications, please visit our [website](#).

DATA IMAGES

**GTX130108 WB Image**

Wild-type (WT) and Bad knockout (KO) HeLa cell extracts (30 μ g) were separated by 15% SDS-PAGE, and the membrane was blotted with Bad antibody (GTX130108) diluted at 1:1000. The HRP-conjugated anti-rabbit IgG antibody (GTX213110-01) was used to detect the primary antibody, and the signal was developed with Trident ECL plus-Enhanced.

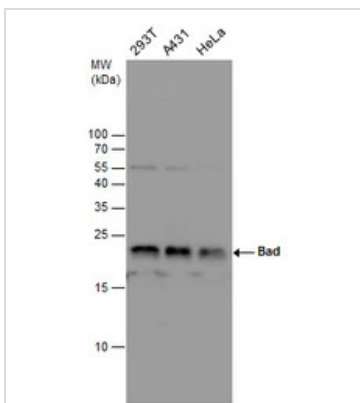
**GTX130108 IHC-P Image**

Bad antibody detects Bad protein at cytoplasm by immunohistochemical analysis.

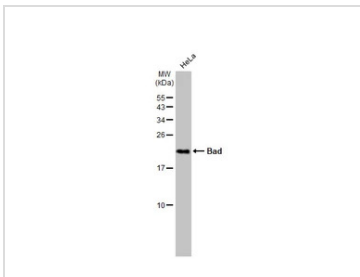
Sample: Paraffin-embedded human breast carcinoma.

Bad stained by Bad antibody (GTX130108) diluted at 1:500.

Antigen Retrieval: Citrate buffer, pH 6.0, 15 min

**GTX130108 WB Image**

Bad antibody detects Bad protein by western blot analysis. Various whole cell extracts (30 μ g) were separated by 15% SDS-PAGE, and the membrane was blotted with Bad antibody (GTX130108) diluted at a dilution of 1:1000.

**GTX130108 WB Image**

Whole cell extract (30 μ g) was separated by 15% SDS-PAGE, and the membrane was blotted with Bad antibody (GTX130108) diluted at 1:1000. The HRP-conjugated anti-rabbit IgG antibody (GTX213110-01) was used to detect the primary antibody.



For full product information, images and publications, please visit our [website](http://www.genetex.com).