

Somatostatin receptor 3 antibody

Cat. No. GTX130114

Host	Rabbit
Clonality	Polyclonal
Isotype	IgG
Application	WB, ICC/IF, IHC-P
Reactivity	Human, Mouse, Rat

Package
100 µl, 25 µl

APPLICATION

Application Note

*Optimal dilutions/concentrations should be determined by the researcher.

Suggested dilution	Recommended dilution
WB	1:500-1:3000
ICC/IF	1:100-1:1000
IHC-P	1:100-1:1000

Not tested in other applications.

Calculated MW 46 kDa. ([Note](#))

PROPERTIES

Form	Liquid
Buffer	PBS, 20% Glycerol
Preservative	0.025% ProClin 300
Storage	Store as concentrated solution. Centrifuge briefly prior to opening vial. For short-term storage (1-2 weeks), store at 4°C. For long-term storage, aliquot and store at -20°C or below. Avoid multiple freeze-thaw cycles.
Concentration	0.54 mg/ml (Please refer to the vial label for the specific concentration.)
Immunogen	Recombinant protein corresponding to human Somatostatin receptor 3.
Purification	Purified by antigen-affinity chromatography.
Conjugation	Unconjugated

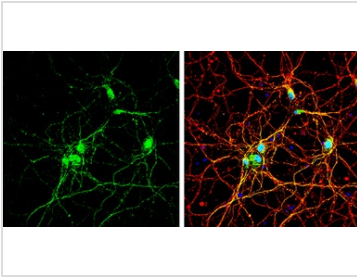
Note

For laboratory research use only. Not for any clinical, therapeutic, or diagnostic use in humans or animals. Not for animal or human consumption.

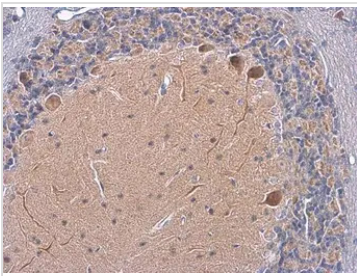
Purchasers shall not, and agree not to enable third parties to, analyze, copy, reverse engineer or otherwise attempt to determine the structure or sequence of the product.



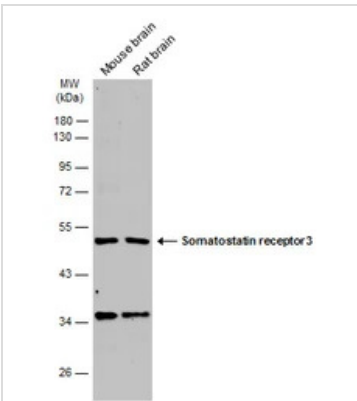
For full product information, images and publications, please visit our [website](#).

DATA IMAGES

GTX130114 ICC/IF Image

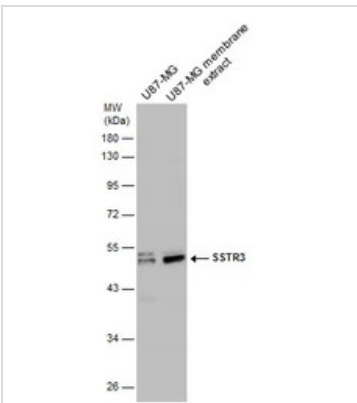
Somatostatin receptor 3 antibody detects Somatostatin receptor 3 protein by immunofluorescent analysis.
 Sample: DIV10 rat E18 primary cortical neuron cells were fixed in 4% paraformaldehyde at RT for 15 min.
 Green: Somatostatin receptor 3 stained by Somatostatin receptor 3 antibody (GTX130114) diluted at 1:500.
 Red: alpha Tubulin, stained by alpha Tubulin antibody [GT114] (GTX628802) diluted at 1:500.
 Blue: Fluoroshield with DAPI (GTX30920).


GTX130114 IHC-P Image

Somatostatin receptor 3 antibody detects Somatostatin receptor 3 protein at cell membrane and cytoplasm by immunohistochemical analysis.
 Sample: Paraffin-embedded mouse brain.
 Somatostatin receptor 3 stained by Somatostatin receptor 3 antibody (GTX130114) diluted at 1:500.
 Antigen Retrieval: Citrate buffer, pH 6.0, 15 min


GTX130114 WB Image

Various tissue extracts (50 µg) were separated by 10% SDS-PAGE, and the membrane was blotted with Somatostatin receptor 3 antibody (GTX130114) diluted at 1:1000. The HRP-conjugated anti-rabbit IgG antibody (GTX213110-01) was used to detect the primary antibody.


GTX130114 WB Image

U87-MG whole cell and membrane extracts (30 µg) were separated by 10% SDS-PAGE, and the membrane was blotted with SSTR3 antibody (GTX130114) diluted at 1:1000.



For full product information, images and publications, please visit our [website](https://www.genetex.com).