

Perilipin 1 antibody

Cat. No. GTX130139

Host	Rabbit
Clonality	Polyclonal
Isotype	IgG
Applications	WB, IHC-P
Reactivity	Mouse

References (1)

Package

100 µl, 25 µl

Applications

Application Note

*Optimal dilutions/concentrations should be determined by the researcher.

Suggested dilution	Recommended dilution
WB	1:500-1:10000
IHC-P	Assay dependent

Not tested in other applications.

Calculated MW 56 kDa. ([Note](#))

Properties

Form	Liquid
Buffer	PBS, 20% Glycerol
Preservative	0.025% ProClin 300
Storage	Store as concentrated solution. Centrifuge briefly prior to opening vial. For short-term storage (1-2 weeks), store at 4°C. For long-term storage, aliquot and store at -20°C or below. Avoid multiple freeze-thaw cycles.
Concentration	1.69 mg/ml (Please refer to the vial label for the specific concentration.)
Immunogen	Recombinant protein encompassing a sequence within the center region of human Perilipin 1. The exact sequence is proprietary.
Purification	Purified by antigen-affinity chromatography.
Conjugation	Unconjugated

Note

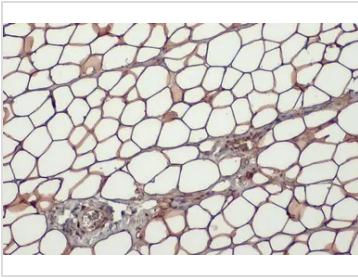
For laboratory research use only. Not for any clinical, therapeutic, or diagnostic use in humans or animals. Not for animal or human consumption.

Purchasers shall not, and agree not to enable third parties to, analyze, copy, reverse engineer or otherwise attempt to determine the structure or sequence of the product.



For full product information, images and publications, please visit our [website](#).

DATA IMAGES



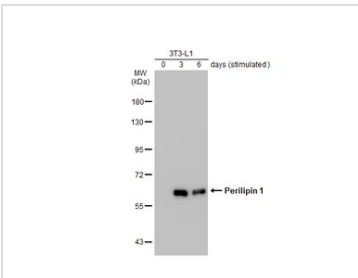
GTx130139 IHC-P Image

Perilipin 1 antibody detects Perilipin 1 protein at cytoplasm by immunohistochemical analysis.

Sample: Paraffin-embedded mouse white adipocyte.

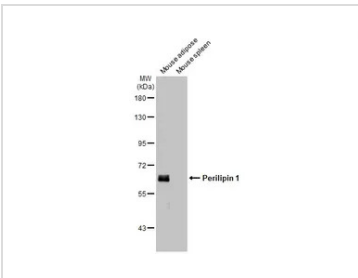
Perilipin 1 stained by Perilipin 1 antibody (GTx130139) diluted at 1:500.

Antigen Retrieval: Citrate buffer, pH 6.0, 15 min



GTx130139 WB Image

Unstimulated and stimulated 3T3-L1 whole cell extracts (20 µg) were separated by 7.5% SDS-PAGE, and the membrane was blotted with Perilipin 1 antibody (GTx130139) diluted at 1:500. The HRP-conjugated anti-rabbit IgG antibody (GTx213110-01) was used to detect the primary antibody. (The differentiation stimulated medium is composed by basal medium, 10% FBS, 50 µg/ml gentamicin, 1 nM L-glutamin, 500 µM IBMX, 1 µM dexamethasone, 2 µM rosiglitazone and 1 µg/ml insulin.)



GTx130139 WB Image

Various tissue extracts (50 µg) were separated by 7.5% SDS-PAGE, and the membrane was blotted with Perilipin 1 antibody (GTx130139) diluted at 1:100000. The HRP-conjugated anti-rabbit IgG antibody (GTx213110-01) was used to detect the primary antibody.



For full product information, images and publications, please visit our [website](https://www.genetex.com).