

SETD1A antibody

Cat. No. GTX130194

Host	Rabbit
Clonality	Polyclonal
Isotype	IgG
Applications	WB, ICC/IF, IHC-P
Reactivity	Human, Mouse

References (1)

Package

100 µl, 25 µl

Applications

Application Note

*Optimal dilutions/concentrations should be determined by the researcher.

Suggested dilution	Recommended dilution
WB	1:500-1:3000
ICC/IF	1:100-1:1000
IHC-P	1:100-1:1000

Not tested in other applications.

Calculated MW 186 kDa. ([Note](#))

Properties

Form	Liquid
Buffer	PBS, 20% Glycerol
Preservative	0.025% ProClin 300
Storage	Store as concentrated solution. Centrifuge briefly prior to opening vial. For short-term storage (1-2 weeks), store at 4°C. For long-term storage, aliquot and store at -20°C or below. Avoid multiple freeze-thaw cycles.
Concentration	1.18 mg/ml (Please refer to the vial label for the specific concentration.)
Immunogen	Recombinant protein encompassing a sequence within the C-terminus region of human SETD1A. The exact sequence is proprietary.
Purification	Purified by antigen-affinity chromatography.
Conjugation	Unconjugated

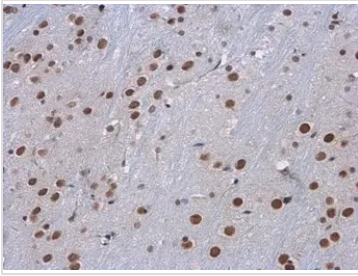
Note

For laboratory research use only. Not for any clinical, therapeutic, or diagnostic use in humans or animals. Not for animal or human consumption.

Purchasers shall not, and agree not to enable third parties to, analyze, copy, reverse engineer or otherwise attempt to determine the structure or sequence of the product.



For full product information, images and publications, please visit our [website](#).

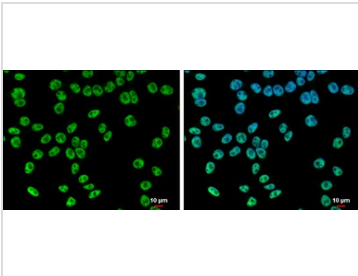
DATA IMAGES

GTX130194 IHC-P Image

SETD1A antibody detects SETD1A protein at nucleus in mouse brain by immunohistochemical analysis.

Sample: Paraffin-embedded mouse brain.

SETD1A antibody (GTX130194) diluted at 1:500.

Antigen Retrieval: Citrate buffer, pH 6.0, 15 min


GTX130194 ICC/IF Image

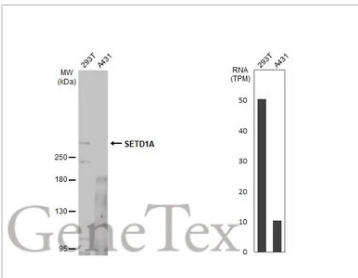
SETD1A antibody detects SETD1A protein at nucleus by immunofluorescent analysis.

Sample: 293T cells were fixed in 4% paraformaldehyde at RT for 15 min.

Green: SETD1A protein stained by SETD1A antibody (GTX130194) diluted at 1:500.

Blue: Hoechst 33342 staining.

Scale bar = 10 μ m.


GTX130194 WB Image

Various whole cell extracts (30 μ g) were separated by 5% SDS-PAGE, and the membrane was blotted with SETD1A antibody (GTX130194) diluted at 1:1000. The HRP-conjugated anti-rabbit IgG antibody (GTX213110-01) was used to detect the primary antibody, and the signal was developed with Trident femto Western HRP Substrate. Corresponding RNA expression data for the same cell lines are based on Human Protein Atlas program.



For full product information, images and publications, please visit our [website](https://www.genetex.com).