

## LGR5 antibody

Cat. No. GTX130204

Host	Rabbit
Clonality	Polyclonal
Isotype	IgG
Applications	WB, ICC/IF, IHC-P
Reactivity	Human, Mouse

## Package

100 µl, 25 µl

## PRODUCT

## Summary

LGR5 antibody recognizes leucine-rich repeat-containing G-protein coupled receptor 5 (LGR5), a receptor protein with a predicted molecular weight of 100 kDa. LGR5, also known as GPR49 or GPR67, is a crucial determinant of the stem cell niche responsible for tissue regeneration in various organs such as the small intestine, colon, and hair follicle. In addition, LGR5 expression is found in cancer stem cells of various tumor types.

## Applications

## Application Note

\*Optimal dilutions/concentrations should be determined by the researcher.

Suggested dilution	Recommended dilution
WB	1:1000-1:10000
ICC/IF	Assay dependent
IHC-P	Assay dependent

**Note :** As is commonly seen with membrane proteins, significant hydrophobicity can lead to aggregation following boiling of samples prior to SDS-PAGE and subsequent western blotting. We recommend to avoid boiling in this case.

**Recommended citrate buffer (pH 6.0) heat-mediated antigen retrieval. The optimal antigen retrieval time is assay dependent. The average time is 2~3 mins. Longer than 5 minutes may destroy the epitope.**

Not tested in other applications.

**Calculated MW** 100 kDa. ([Note](#))

## Properties

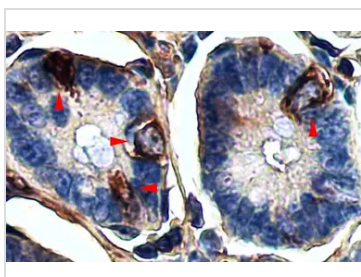
Form	Liquid
Buffer	PBS, 20% Glycerol
Preservative	0.025% ProClin 300
Storage	Store as concentrated solution. Centrifuge briefly prior to opening vial. For short-term storage (1-2 weeks), store at 4°C. For long-term storage, aliquot and store at -20°C or below. Avoid multiple freeze-thaw cycles.
Concentration	1.21 mg/ml (Please refer to the vial label for the specific concentration.)



For full product information, images and publications, please visit our [website](#).

<b>Immunogen</b>	Recombinant protein encompassing a sequence within the Extracellular domain of human LGR5. The exact sequence is proprietary.
<b>Purification</b>	Purified by antigen-affinity chromatography.
<b>Conjugation</b>	Unconjugated
<b>Note</b>	For laboratory research use only. Not for any clinical, therapeutic, or diagnostic use in humans or animals. Not for animal or human consumption.  Purchasers shall not, and agree not to enable third parties to, analyze, copy, reverse engineer or otherwise attempt to determine the structure or sequence of the product.

## DATA IMAGES

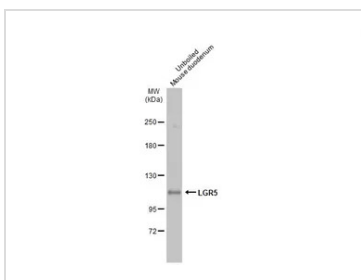
**GTX130204 IHC-P Image**

LGR5 antibody detects LGR5 protein at cell membrane and cytoplasm by immunohistochemical analysis.

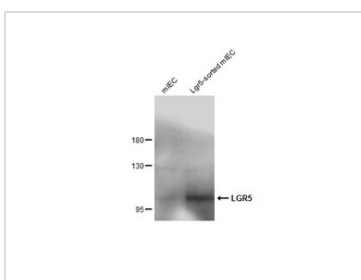
Sample: Paraffin-embedded mouse intestine.

LGR5 stained by LGR5 antibody (GTX130204) diluted at 1:25.

Antigen Retrieval: Citrate buffer, pH 6.0, 5 min

**GTX130204 WB Image**

Unboiled mouse tissue extract (50 µg) was separated by 5% SDS-PAGE, and the membrane was blotted with LGR5 antibody (GTX130204) diluted at 1:500. The HRP-conjugated anti-rabbit IgG antibody (GTX213110-01) was used to detect the primary antibody, and the signal was developed with Trident ECL plus-Enhanced.

**GTX130204 WB Image**

Various whole cell extracts (2 µg) were separated by 5% SDS-PAGE, and the membrane was blotted with LGR5 antibody (GTX130204) diluted at 1:1000. The HRP-conjugated anti-rabbit IgG antibody (GTX213110-01) was used to detect the primary antibody.



For full product information, images and publications, please visit our [website](https://www.genetex.com).