

Anterior Gradient 2 antibody

Cat. No. GTX130229

Host	Rabbit
Clonality	Polyclonal
Isotype	IgG
Applications	WB, ICC/IF, IHC-P, IP
Reactivity	Human, Mouse

Package
100 µl, 25 µl

Applications

Application Note

*Optimal dilutions/concentrations should be determined by the researcher.

Suggested dilution	Recommended dilution
WB	1:500-1:3000
ICC/IF	1:100-1:1000
IHC-P	1:100-1:1000
IP	1:100-1:500

Not tested in other applications.

Calculated MW 20 kDa. ([Note](#))

Properties

Form	Liquid
Buffer	PBS, 20% Glycerol
Preservative	0.025% ProClin 300
Storage	Store as concentrated solution. Centrifuge briefly prior to opening vial. For short-term storage (1-2 weeks), store at 4°C. For long-term storage, aliquot and store at -20°C or below. Avoid multiple freeze-thaw cycles.
Concentration	0.2 mg/ml (Please refer to the vial label for the specific concentration.)
Immunogen	Recombinant protein encompassing a sequence within the center region of human Anterior Gradient 2. The exact sequence is proprietary.
Purification	Purified by antigen-affinity chromatography.
Conjugation	Unconjugated

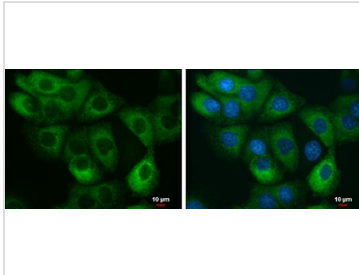


For full product information, images and publications, please visit our [website](#).

For laboratory research use only. Not for any clinical, therapeutic, or diagnostic use in humans or animals. Not for animal or human consumption.

Note

Purchasers shall not, and agree not to enable third parties to, analyze, copy, reverse engineer or otherwise attempt to determine the structure or sequence of the product.

DATA IMAGES

GTx130229 ICC/IF Image

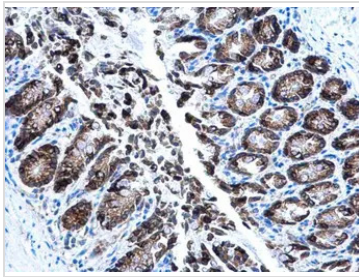
AGR2 antibody detects AGR2 protein at cytoplasm by immunofluorescent analysis.

Sample: MCF7 cells were fixed in 4% paraformaldehyde at RT for 15 min.

Green: AGR2 protein stained by AGR2 antibody (GTx130229) diluted at 1:1000.

Blue: Hoechst 33342 staining.

Scale bar = 10 μm.

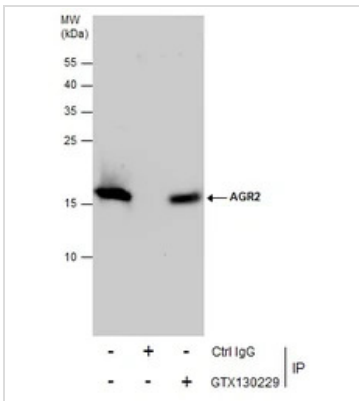

GTx130229 IHC-P Image

AGR2 antibody detects AGR2 protein at cytoplasm in mouse colon by immunohistochemical analysis.

Sample: Paraffin-embedded mouse colon.

AGR2 antibody (GTx130229) diluted at 1:500.

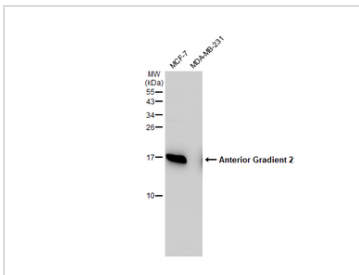
Antigen Retrieval: Citrate buffer, pH 6.0, 15 min


GTx130229 IP Image

Immunoprecipitation of AGR2 protein from MCF-7 whole cell extracts using 5 μg of AGR2 antibody (GTx130229).

Western blot analysis was performed using AGR2 antibody (GTx130229).

EasyBlot anti-Rabbit IgG (GTx221666-01) was used as a secondary reagent.


GTx130229 WB Image

Various whole cell extracts (30 μg) were separated by 15% SDS-PAGE, and the membrane was blotted with Anterior Gradient 2 antibody (GTx130229) diluted at 1:1000. The HRP-conjugated anti-rabbit IgG antibody (GTx213110-01) was used to detect the primary antibody.



For full product information, images and publications, please visit our [website](https://www.genetex.com).