

iNOS antibody

Cat. No. GTX130246

| | |
|--------------|-------------------|
| Host | Rabbit |
| Clonality | Polyclonal |
| Isotype | IgG |
| Applications | WB, ICC/IF, IHC-P |
| Reactivity | Mouse, Rat |

References (45)

★★★★☆ Review (4)

Package

100 µl, 25 µl

Applications

Application Note

*Optimal dilutions/concentrations should be determined by the researcher.

| Suggested dilution | Recommended dilution |
|--------------------|----------------------|
| WB | 1:500-1:3000 |
| ICC/IF | 1:100-1:1000 |
| IHC-P | 1:100-1:1000 |

Not tested in other applications.

Calculated MW 131 kDa. ([Note](#))

Properties

| | |
|---------------|--|
| Form | Liquid |
| Buffer | PBS, 20% Glycerol |
| Preservative | 0.025% ProClin 300 |
| Storage | Store as concentrated solution. Centrifuge briefly prior to opening vial. For short-term storage (1-2 weeks), store at 4°C. For long-term storage, aliquot and store at -20°C or below. Avoid multiple freeze-thaw cycles. |
| Concentration | 1.02 mg/ml (Please refer to the vial label for the specific concentration.) |
| Immunogen | Carrier-protein conjugated synthetic peptide encompassing a sequence within the C-terminus region of mouse iNOS. The exact sequence is proprietary. |
| Purification | Purified by antigen-affinity chromatography. |
| Conjugation | Unconjugated |

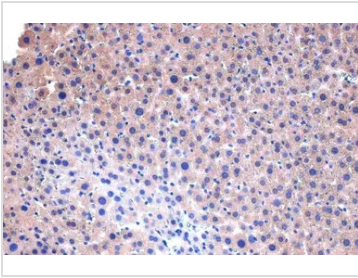
Note

For laboratory research use only. Not for any clinical, therapeutic, or diagnostic use in humans or animals. Not for animal or human consumption.

Purchasers shall not, and agree not to enable third parties to, analyze, copy, reverse engineer or otherwise attempt to determine the structure or sequence of the product.



For full product information, images and publications, please visit our [website](#).

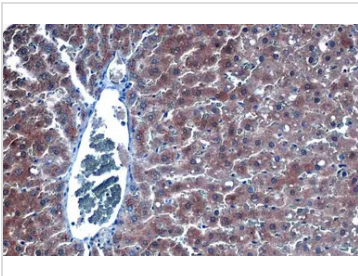
DATA IMAGES

GTX130246 IHC-P Image

iNOS antibody detects iNOS protein at cytoplasm by immunohistochemical analysis.

Sample: Paraffin-embedded mouse liver.

iNOS stained by iNOS antibody (GTX130246) diluted at 1:500.

Antigen Retrieval: Citrate buffer, pH 6.0, 15 min

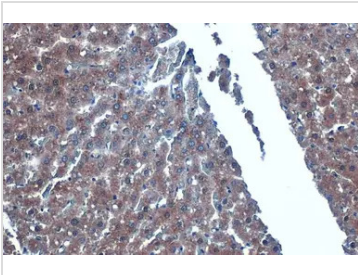

GTX130246 IHC-P Image

iNOS antibody detects iNOS protein at cytoplasm by immunohistochemical analysis.

Sample: Paraffin-embedded rat liver.

iNOS stained by iNOS antibody (GTX130246) diluted at 1:500.

Antigen Retrieval: Citrate buffer, pH 6.0, 15 min

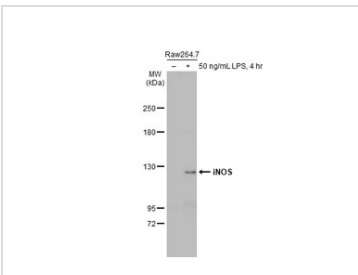

GTX130246 IHC-P Image

iNOS antibody detects iNOS protein at cytoplasm by immunohistochemical analysis.

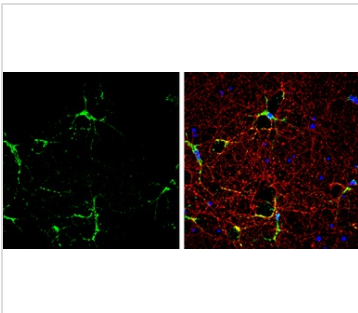
Sample: Paraffin-embedded rat liver.

iNOS stained by iNOS antibody (GTX130246) diluted at 1:500.

Antigen Retrieval: Citrate buffer, pH 6.0, 15 min


GTX130246 WB Image

Untreated (-) and treated (+) Raw264.7 whole cell extracts (30 µg) were separated by 5% SDS-PAGE, and the membrane was blotted with iNOS antibody (GTX130246) diluted at 1:1000. The HRP-conjugated anti-rabbit IgG antibody (GTX213110-01) was used to detect the primary antibody.


GTX130246 ICC/IF Image

iNOS antibody detects iNOS protein by immunofluorescent analysis.

Sample: DIV10 rat E18 primary cortical neuron and glia cells were fixed in 4% paraformaldehyde at RT for 15 min.

Green: iNOS stained by iNOS antibody (GTX130246) diluted at 1:500.

Red: beta Tubulin 3/ Tuj1, stained by beta Tubulin 3/ Tuj1 antibody [GT11710] (GTX631836) diluted at 1:1000.

Blue: Fluoroshield with DAPI (GTX30920).



For full product information, images and publications, please visit our [website](https://www.genetex.com).