

## CD31 antibody

**Cat. No. GTX130274**

<b>Host</b>	Rabbit
<b>Clonality</b>	Polyclonal
<b>Isotype</b>	IgG
<b>Applications</b>	WB, IHC-P, IHC-Fr
<b>Reactivity</b>	Human, Mouse

References ( 18 )

 Review ( 2 )

Package

100 µl, 25 µl

## Applications

**Application Note**

\*Optimal dilutions/concentrations should be determined by the researcher.

Suggested dilution	Recommended dilution
WB	1:500-1:3000
IHC-P	1:100-1:1000
IHC-Fr	Assay dependent

Not tested in other applications.

**Calculated MW** 81 kDa. ( [Note](#) )

## Properties

<b>Form</b>	Liquid
<b>Buffer</b>	PBS, 20% Glycerol
<b>Preservative</b>	0.025% ProClin 300
<b>Storage</b>	Store as concentrated solution. Centrifuge briefly prior to opening vial. For short-term storage (1-2 weeks), store at 4°C. For long-term storage, aliquot and store at -20°C or below. Avoid multiple freeze-thaw cycles.
<b>Concentration</b>	1.44 mg/ml (Please refer to the vial label for the specific concentration.)
<b>Immunogen</b>	Synthetic peptide encompassing a sequence within the Extracellular domain of mouse CD31. The exact sequence is proprietary.
<b>Purification</b>	Purified by antigen-affinity chromatography.
<b>Conjugation</b>	Unconjugated

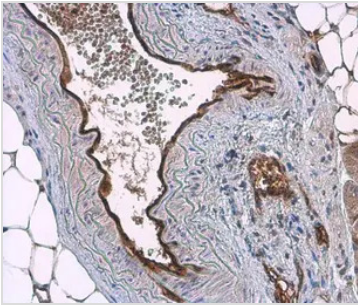
**Note**

For laboratory research use only. Not for any clinical, therapeutic, or diagnostic use in humans or animals. Not for animal or human consumption.

Purchasers shall not, and agree not to enable third parties to, analyze, copy, reverse engineer or otherwise attempt to determine the structure or sequence of the product.

For full product information, images and publications, please visit our [website](#).

## DATA IMAGES

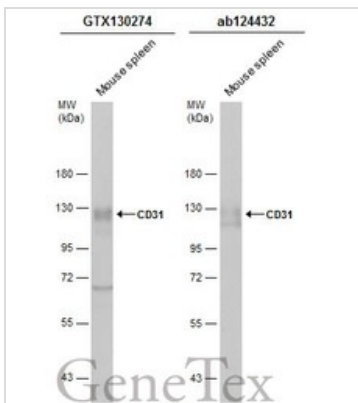
**GTX130274 IHC-P Image**

CD31 antibody detects CD31 protein at cell membrane by immunohistochemical analysis.

Sample: Paraffin-embedded mouse artery.

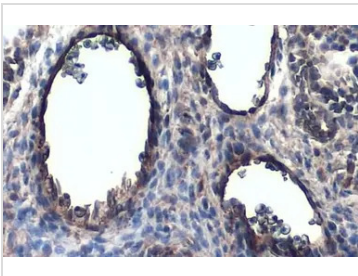
CD31 stained by CD31 antibody (GTX130274) diluted at 1:2000.

Antigen Retrieval: Citrate buffer, pH 6.0, 15 min

**GTX130274 WB Image**

Mouse tissue extract (50 µg) was separated by 7.5% SDS-PAGE, and the membranes were blotted with CD31 antibody (GTX130274) diluted at 1:500 and competitor's antibody (ab124432) diluted at 1:500. The HRP-conjugated anti-rabbit IgG antibody (GTX213110-01) was used to detect the primary antibody.

\*The competitor is not affiliated with GeneTex and does not endorse this product.

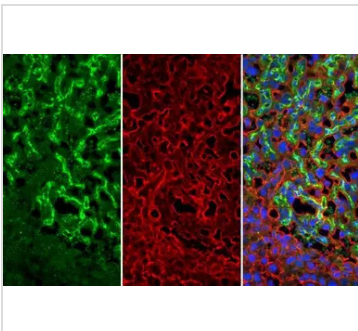
**GTX130274 IHC-P Image**

CD31 antibody detects CD31 protein at cell membrane and cytoplasm by immunohistochemical analysis.

Sample: Paraffin-embedded mouse placenta.

CD31 stained by CD31 antibody (GTX130274) diluted at 1:1000.

Antigen Retrieval: Citrate buffer, pH 6.0, 15 min

**GTX130274 IHC-P Image**

CD31 antibody detects CD31 protein at cell membrane by immunohistochemical analysis.

Sample: Paraffin-embedded mouse placenta.

Green: CD31 stained by CD31 antibody (GTX130274) diluted at 1:250.

Red: beta Actin, a Cytoskeleton marker, stained by beta Actin antibody [GT5512] (GTX629630) diluted at 1:500.

Blue: Fluoroshield with DAPI (GTX30920).

Antigen Retrieval: Citrate buffer, pH 6.0, 15 min



For full product information, images and publications, please visit our [website](#).