

## SA2 antibody

**Cat. No. GTX130299**

<b>Host</b>	Rabbit
<b>Clonality</b>	Polyclonal
<b>Isotype</b>	IgG
<b>Application</b>	WB, ICC/IF, IP
<b>Reactivity</b>	Human

**Package**  
100 µl, 25 µl

### APPLICATION

#### Application Note

\*Optimal dilutions/concentrations should be determined by the researcher.

Suggested dilution	Recommended dilution
WB	1:500-1:10000
ICC/IF	1:100-1:1000
IP	1:100-1:500

Not tested in other applications.

**Calculated MW** 141 kDa. ([Note](#))

### PROPERTIES

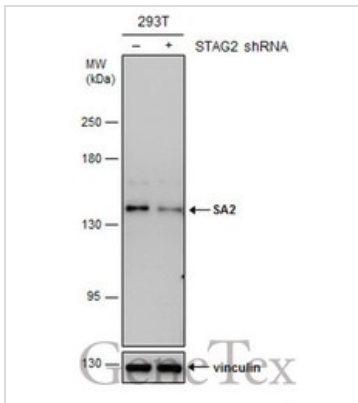
<b>Form</b>	Liquid
<b>Buffer</b>	PBS, 20% Glycerol
<b>Preservative</b>	0.025% ProClin 300
<b>Storage</b>	Store as concentrated solution. Centrifuge briefly prior to opening vial. For short-term storage (1-2 weeks), store at 4°C. For long-term storage, aliquot and store at -20°C or below. Avoid multiple freeze-thaw cycles.
<b>Concentration</b>	0.15 mg/ml (Please refer to the vial label for the specific concentration.)
<b>Immunogen</b>	Carrier-protein conjugated synthetic peptide encompassing a sequence within the C-terminus region of human SA2. The exact sequence is proprietary.
<b>Purification</b>	Purified by antigen-affinity chromatography.
<b>Conjugation</b>	Unconjugated

**Note** For laboratory research use only. Not for any clinical, therapeutic, or diagnostic use in humans or animals. Not for animal or human consumption.

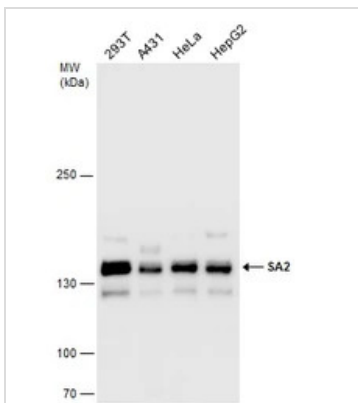
Purchasers shall not, and agree not to enable third parties to, analyze, copy, reverse engineer or otherwise attempt to determine the structure or sequence of the product.



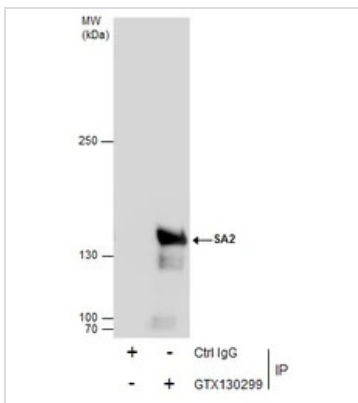
For full product information, images and publications, please visit our [website](#).

**DATA IMAGES**

**GTx130299 WB Image**

Non-transfected (–) and transfected (+) 293T whole cell extracts (30 µg) were separated by 5% SDS-PAGE, and the membrane was blotted with SA2 antibody (GTx130299) diluted at 1:6000.


**GTx130299 WB Image**

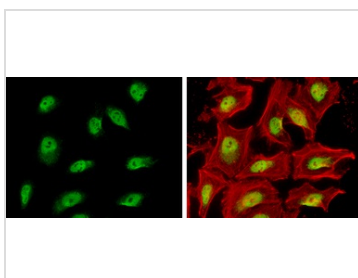
Various whole cell extracts (30 µg) were separated by 5% SDS-PAGE, and the membrane was blotted with SA2 antibody (GTx130299) diluted at 1:1000.


**GTx130299 IP Image**

Immunoprecipitation of SA2 protein from HeLa whole cell extracts using 5 µg of SA2 antibody (GTx130299).

Western blot analysis was performed using SA2 antibody (GTx130299).

EasyBlot anti-Rabbit IgG (GTx221666-01) was used as a secondary reagent.


**GTx130299 ICC/IF Image**

SA2 antibody detects SA2 protein at nucleus by immunofluorescent analysis.

Sample: HeLa cells were fixed in 4% paraformaldehyde at RT for 15 min.

Green: SA2 protein stained by SA2 antibody (GTx130299) diluted at 1:500.

Red: Phalloidin, a F-actin marker, diluted at 1:200.



For full product information, images and publications, please visit our [website](https://www.genetex.com).