

SA2 antibody

Cat. No. GTX130304

Host	Rabbit
Clonality	Polyclonal
Isotype	IgG
Applications	WB, IHC-P, IP
Reactivity	Human

Package
100 µl, 25 µl

Applications

Application Note

*Optimal dilutions/concentrations should be determined by the researcher.

Suggested dilution	Recommended dilution
WB	1:500-1:3000
IHC-P	1:100-1:1000
IP	1:100-1:500

Not tested in other applications.

Calculated MW 141 kDa. ([Note](#))

Properties

Form	Liquid
Buffer	PBS, 20% Glycerol
Preservative	0.025% ProClin 300
Storage	Store as concentrated solution. Centrifuge briefly prior to opening vial. For short-term storage (1-2 weeks), store at 4°C. For long-term storage, aliquot and store at -20°C or below. Avoid multiple freeze-thaw cycles.
Concentration	1.58 mg/ml (Please refer to the vial label for the specific concentration.)
Immunogen	Recombinant protein encompassing a sequence within the N-terminus region of human SA2. The exact sequence is proprietary.
Purification	Purified by antigen-affinity chromatography.
Conjugation	Unconjugated

Note

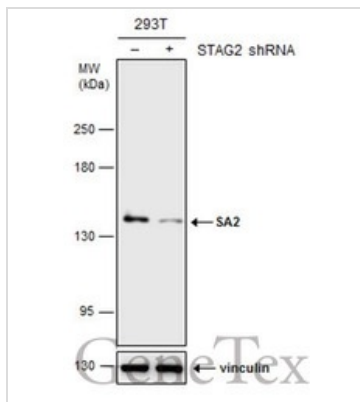
For laboratory research use only. Not for any clinical, therapeutic, or diagnostic use in humans or animals. Not for animal or human consumption.

Purchasers shall not, and agree not to enable third parties to, analyze, copy, reverse engineer or otherwise attempt to determine the structure or sequence of the product.



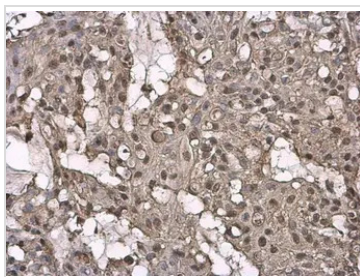
For full product information, images and publications, please visit our [website](#).

DATA IMAGES



GTX130304 WB Image

Non-transfected (-) and transfected (+) 293T whole cell extracts (30 µg) were separated by 5% SDS-PAGE, and the membrane was blotted with SA2 antibody (GTX130304) diluted at 1:2000.



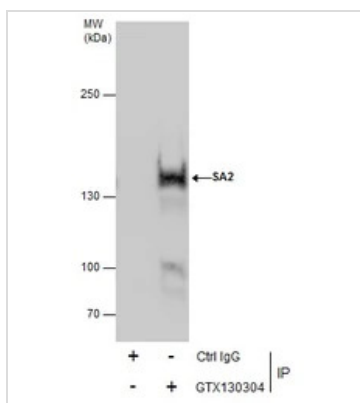
GTX130304 IHC-P Image

SA2 antibody detects SA2 protein at nucleus by immunohistochemical analysis.

Sample: Paraffin-embedded human breast carcinoma.

SA2 stained by SA2 antibody (GTX130304) diluted at 1:500.

Antigen Retrieval: Citrate buffer, pH 6.0, 15 min

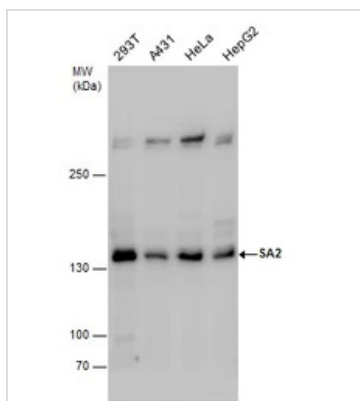


GTX130304 IP Image

Immunoprecipitation of SA2 protein from 293T whole cell extracts using 5 µg of SA2 antibody (GTX130304).

Western blot analysis was performed using SA2 antibody (GTX130304) diluted at 1:500.

EasyBlot anti-Rabbit IgG (GTX221666-01) was used as a secondary reagent.



GTX130304 WB Image

Various whole cell extracts (30 µg) were separated by 5% SDS-PAGE, and the membrane was blotted with SA2 antibody (GTX130304) diluted at 1:1000.



For full product information, images and publications, please visit our [website](https://www.genetex.com).