

GM130 antibody

Cat. No. GTX130351

Host	Rabbit
Clonality	Polyclonal
Isotype	IgG
Applications	WB, ICC/IF, IP
Reactivity	Human

References (4)

Package

100 µl, 25 µl

Applications

Application Note

*Optimal dilutions/concentrations should be determined by the researcher.

Suggested dilution	Recommended dilution
WB	1:500-1:3000
ICC/IF	1:100-1:1000
IP	1:100-1:500

Not tested in other applications.

Calculated MW 113 kDa. ([Note](#))

Properties

Form	Liquid
Buffer	PBS, 20% Glycerol
Preservative	0.025% ProClin 300
Storage	Store as concentrated solution. Centrifuge briefly prior to opening vial. For short-term storage (1-2 weeks), store at 4°C. For long-term storage, aliquot and store at -20°C or below. Avoid multiple freeze-thaw cycles.
Concentration	0.45 mg/ml (Please refer to the vial label for the specific concentration.)
Immunogen	Recombinant protein encompassing a sequence within the C-terminus region of human GM130. The exact sequence is proprietary.
Purification	Purified by antigen-affinity chromatography.
Conjugation	Unconjugated

Note

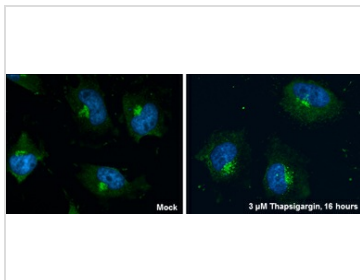
For laboratory research use only. Not for any clinical, therapeutic, or diagnostic use in humans or animals. Not for animal or human consumption.

Purchasers shall not, and agree not to enable third parties to, analyze, copy, reverse engineer or otherwise attempt to determine the structure or sequence of the product.



For full product information, images and publications, please visit our [website](#).

DATA IMAGES



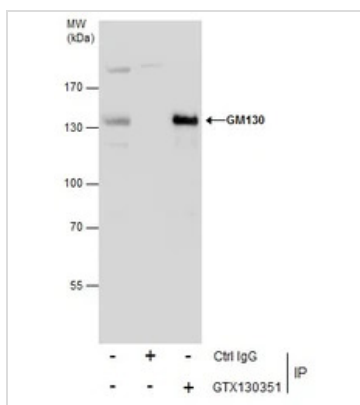
GM130351 ICC/IF Image

GM130 antibody detects GM130 protein at Golgi apparatus and endoplasmic reticulum by immunofluorescent analysis.

Sample: HeLa cells were fixed in 4% paraformaldehyde at RT for 15 min.

Green: GM130 protein stained by GM130 antibody (GTX130351) diluted at 1:200.

Blue: Hoechst 33342 staining.

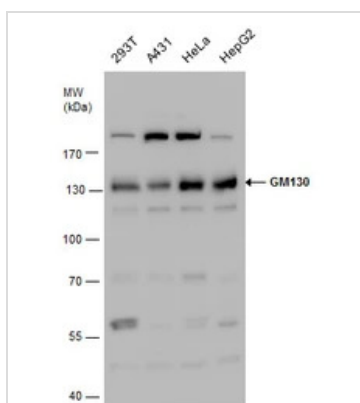


GM130351 IP Image

Immunoprecipitation of GM130 protein from HeLa whole cell extracts using 5 μg of GM130 antibody (GTX130351).

Western blot analysis was performed using GM130 antibody (GTX130351).

EasyBlot anti-Rabbit IgG (GTX221666-01) was used as a secondary reagent.



GM130351 WB Image

GM130 antibody detects GM130 protein by western blot analysis. Various whole cell extracts (30 μg) were separated by 7.5% SDS-PAGE, and the membrane was blotted with GM130 antibody (GTX130351) diluted by 1:1000.



For full product information, images and publications, please visit our [website](https://www.genetex.com).