

UBE2I antibody

Cat. No. GTX130355

Host	Rabbit
Clonality	Polyclonal
Isotype	IgG
Applications	WB, IHC-P, IP
Reactivity	Human, Mouse

Package
100 µl, 25 µl

Applications

Application Note

*Optimal dilutions/concentrations should be determined by the researcher.

Suggested dilution	Recommended dilution
WB	1:500-1:3000
IHC-P	1:100-1:1000
IP	1:100-1:500

Not tested in other applications.

Calculated MW 18 kDa. ([Note](#))

Properties

Form	Liquid
Buffer	PBS, 20% Glycerol
Preservative	0.025% ProClin 300
Storage	Store as concentrated solution. Centrifuge briefly prior to opening vial. For short-term storage (1-2 weeks), store at 4°C. For long-term storage, aliquot and store at -20°C or below. Avoid multiple freeze-thaw cycles.
Concentration	0.7 mg/ml (Please refer to the vial label for the specific concentration.)
Immunogen	Recombinant protein encompassing a sequence within the center region of human UBE2I. The exact sequence is proprietary.
Purification	Purified by antigen-affinity chromatography.
Conjugation	Unconjugated

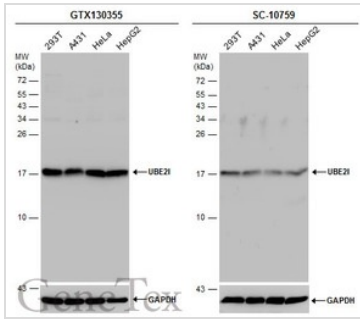
Note For laboratory research use only. Not for any clinical, therapeutic, or diagnostic use in humans or animals. Not for animal or human consumption.

Purchasers shall not, and agree not to enable third parties to, analyze, copy, reverse engineer or otherwise attempt to determine the structure or sequence of the product.



For full product information, images and publications, please visit our [website](#).

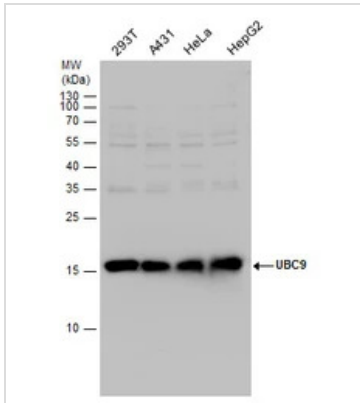
DATA IMAGES



GTX130355 WB Image

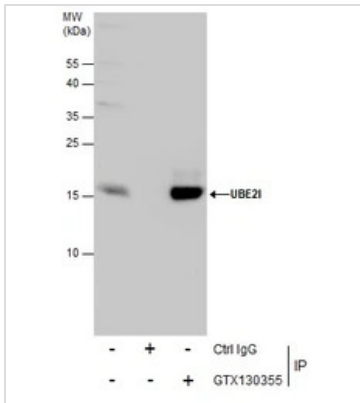
Various whole cell extracts (30 µg) were separated by 15% SDS-PAGE, and the membranes were blotted with UBE2I antibody (GTX130355) diluted at 1:1000 and competitor's antibody (SC-10759) diluted by 1:500.

*The competitor is not affiliated with GeneTex and does not endorse this product.



GTX130355 WB Image

UBC9 antibody detects UBC9 protein by western blot analysis. Various whole cell extracts (30 µg) were separated by 15% SDS-PAGE, and the membrane was blotted with UBC9 antibody (GTX130355) diluted by 1:1000.

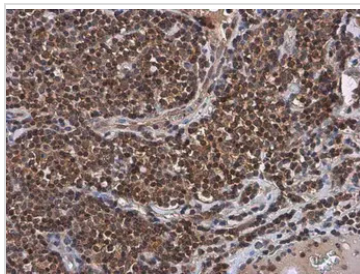


GTX130355 IP Image

Immunoprecipitation of UBE2I protein from 293T whole cell extracts using 5 µg of UBE2I antibody (GTX130355).

Western blot analysis was performed using UBE2I antibody (GTX130355).

EasyBlot anti-Rabbit IgG (GTX221666-01) was used as a secondary reagent.



GTX130355 IHC-P Image

UBE2I antibody detects UBE2I protein at nucleus by immunohistochemical analysis.

Sample: Paraffin-embedded human tonsil.

UBE2I stained by UBE2I antibody (GTX130355) diluted at 1:500.

Antigen Retrieval: Citrate buffer, pH 6.0, 15 min



For full product information, images and publications, please visit our [website](http://www.genetex.com).