

BTK (phospho Tyr223) antibody

Cat. No. GTX130377

Host	Rabbit
Clonality	Polyclonal
Isotype	IgG
Applications	WB, IHC-P
Reactivity	Human, Mouse, Rat

References (1)

Package

100 µl, 25 µl

Applications

Application Note

*Optimal dilutions/concentrations should be determined by the researcher.

Suggested dilution	Recommended dilution
WB	1:1000-1:10000
IHC-P	1:100-1:1000

Not tested in other applications.

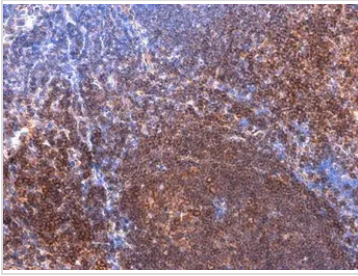
Calculated MW 76 kDa. ([Note](#))

Properties

Form	Liquid
Buffer	PBS, 1% BSA, 20% Glycerol
Preservative	0.025% ProClin 300
Storage	Store as concentrated solution. Centrifuge briefly prior to opening vial. For short-term storage (1-2 weeks), store at 4°C. For long-term storage, aliquot and store at -20°C or below. Avoid multiple freeze-thaw cycles.
Concentration	1.1 mg/ml (Please refer to the vial label for the specific concentration.)
Immunogen	Carrier-protein conjugated synthetic peptide surrounding phospho Tyr223 of human BTK. The exact sequence is proprietary.
Purification	Purified by antigen-affinity chromatography.
Conjugation	Unconjugated
Note	For laboratory research use only. Not for any clinical, therapeutic, or diagnostic use in humans or animals. Not for animal or human consumption. Purchasers shall not, and agree not to enable third parties to, analyze, copy, reverse engineer or otherwise attempt to determine the structure or sequence of the product.

For full product information, images and publications, please visit our [website](#).

DATA IMAGES

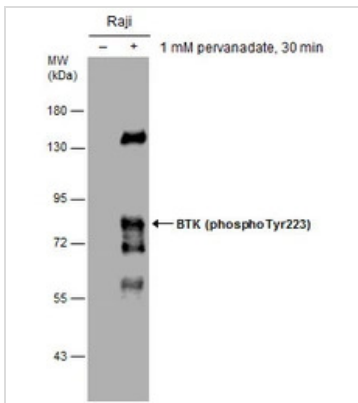
**GTX130377 IHC-P Image**

BTK (phospho Tyr223) antibody detects BTK (phospho Tyr223) protein by immunohistochemical analysis.

Sample: Paraffin-embedded mouse spleen.

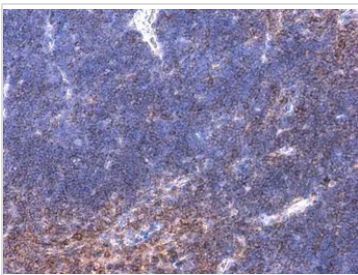
BTK (phospho Tyr223) stained by BTK (phospho Tyr223) antibody (GTX130377) diluted at 1:500.

Antigen Retrieval: Citrate buffer, pH 6.0, 15 min

**GTX130377 WB Image**

Untreated (-) and treated (+) Raji whole cell extracts (1 µg) were separated by 7.5% SDS-PAGE, and the

membrane was blotted with BTK (phospho Tyr223) antibody (GTX130377) diluted at 1:6000.

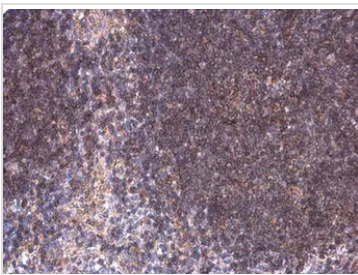
**GTX130377 IHC-P Image**

BTK (phospho Tyr223) antibody detects BTK (phospho Tyr223) protein by immunohistochemical analysis.

Sample: Paraffin-embedded mouse thymus gland.

BTK (phospho Tyr223) stained by BTK (phospho Tyr223) antibody (GTX130377) diluted at 1:500.

Antigen Retrieval: Citrate buffer, pH 6.0, 15 min

**GTX130377 IHC-P Image**

BTK (phospho Tyr223) antibody detects BTK (phospho Tyr223) protein by immunohistochemical analysis.

Sample: Paraffin-embedded rat lymph node.

BTK (phospho Tyr223) stained by BTK (phospho Tyr223) antibody (GTX130377) diluted at 1:500.

Antigen Retrieval: Citrate buffer, pH 6.0, 15 min



For full product information, images and publications, please visit our [website](http://www.genetex.com).