

ATF1 (phospho Ser63) antibody

Cat. No. GTX130420

Host	Rabbit
Clonality	Polyclonal
Isotype	IgG
Application	WB
Reactivity	Human, Mouse

Reference (1)
 Package
 100 µl, 25 µl

APPLICATION

Application Note

*Optimal dilutions/concentrations should be determined by the researcher.

Suggested dilution	Recommended dilution
WB	1:1000-1:10000

Not tested in other applications.

Calculated MW 29 kDa. ([Note](#))

Product Note This antibody is raised against human ATF1 phosphorylated at Ser63, and it also may detect the phosphorylated CREB protein due to sequence homology.

PROPERTIES

Form	Liquid
Buffer	PBS, 1% BSA, 20% Glycerol
Preservative	0.025% ProClin 300
Storage	Store as concentrated solution. Centrifuge briefly prior to opening vial. For short-term storage (1-2 weeks), store at 4°C. For long-term storage, aliquot and store at -20°C or below. Avoid multiple freeze-thaw cycles.
Concentration	0.94 mg/ml (Please refer to the vial label for the specific concentration.)
Immunogen	Carrier-protein conjugated synthetic peptide surrounding phospho Ser63 of human ATF1. The exact sequence is proprietary.
Purification	Purified by antigen-affinity chromatography.
Conjugation	Unconjugated

Note

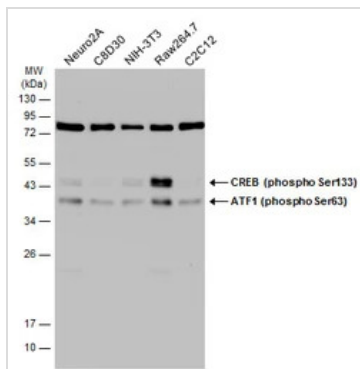
For laboratory research use only. Not for any clinical, therapeutic, or diagnostic use in humans or animals. Not for animal or human consumption.

Purchasers shall not, and agree not to enable third parties to, analyze, copy, reverse engineer or otherwise attempt to determine the structure or sequence of the product.



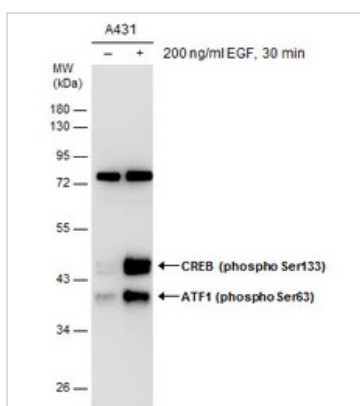
For full product information, images and publications, please visit our [website](#).

DATA IMAGES



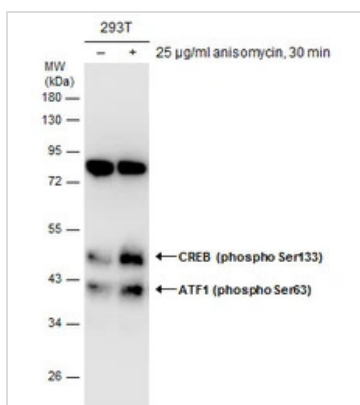
GTX130420 WB Image

Various whole cell extracts (30 μ g) were separated by 12% SDS-PAGE, and the membrane was blotted with ATF1 (phospho Ser63) antibody (GTX130420) diluted at 1:5000. The HRP-conjugated anti-rabbit IgG antibody (GTX213110-01) was used to detect the primary antibody.



GTX130420 WB Image

Untreated (-) and treated (+) A431 whole cell extracts (50 μ g) were separated by 10% SDS-PAGE, and the membrane was blotted with ATF1 (phospho Ser63) antibody (GTX130420) diluted at 1:5000.



GTX130420 WB Image

Untreated (-) and treated (+) 293T whole cell extracts (50 μ g) were separated by 10% SDS-PAGE, and the membrane was blotted with ATF1 (phospho Ser63) antibody (GTX130420) diluted at 1:5000.



For full product information, images and publications, please visit our [website](https://www.genetex.com).