

## ATF1 (phospho Ser63) antibody

**Cat. No. GTX130420**

<b>Host</b>	Rabbit
<b>Clonality</b>	Polyclonal
<b>Isotype</b>	IgG
<b>Applications</b>	WB
<b>Reactivity</b>	Human, Mouse

References ( 3 )

Package

100 µl, 25 µl

## Applications

**Application Note**

\*Optimal dilutions/concentrations should be determined by the researcher.

Suggested dilution	Recommended dilution
WB	1:1000-1:10000

Not tested in other applications.

<b>Calculated MW</b>	29 kDa. ( <a href="#">Note</a> )
----------------------	----------------------------------

**Product Note**

This antibody is raised against human ATF1 phosphorylated at Ser63, and it also may detect the phosphorylated CREB protein due to sequence homology.

## Properties

<b>Form</b>	Liquid
<b>Buffer</b>	PBS, 1% BSA, 20% Glycerol
<b>Preservative</b>	0.025% ProClin 300
<b>Storage</b>	Store as concentrated solution. Centrifuge briefly prior to opening vial. For short-term storage (1-2 weeks), store at 4°C. For long-term storage, aliquot and store at -20°C or below. Avoid multiple freeze-thaw cycles.
<b>Concentration</b>	0.94 mg/ml (Please refer to the vial label for the specific concentration.)
<b>Immunogen</b>	Carrier-protein conjugated synthetic peptide surrounding phospho Ser63 of human ATF1. The exact sequence is proprietary.
<b>Purification</b>	Purified by antigen-affinity chromatography.
<b>Conjugation</b>	Unconjugated

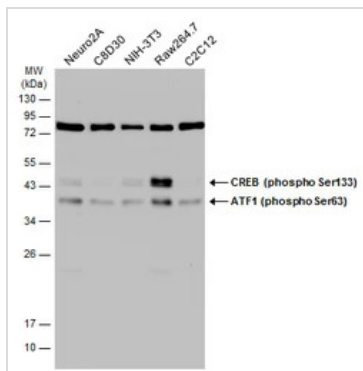
**Note**

For laboratory research use only. Not for any clinical, therapeutic, or diagnostic use in humans or animals. Not for animal or human consumption.

Purchasers shall not, and agree not to enable third parties to, analyze, copy, reverse engineer or otherwise attempt to determine the structure or sequence of the product.

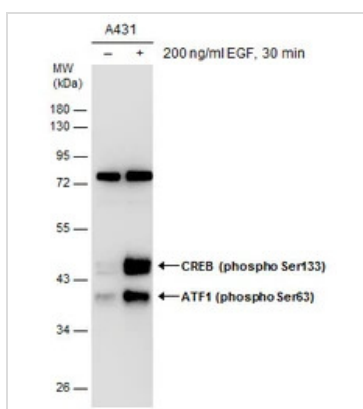
For full product information, images and publications, please visit our [website](#).

DATA IMAGES



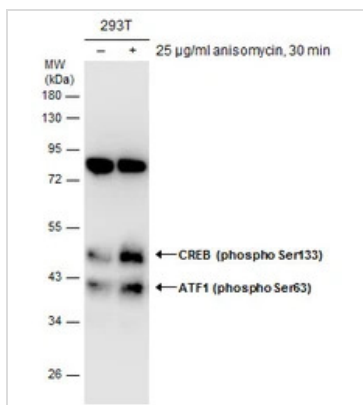
**GTX130420 WB Image**

Various whole cell extracts (30 µg) were separated by 12% SDS-PAGE, and the membrane was blotted with ATF1 (phospho Ser63) antibody (GTX130420) diluted at 1:5000. The HRP-conjugated anti-rabbit IgG antibody (GTX213110-01) was used to detect the primary antibody.



**GTX130420 WB Image**

Untreated (-) and treated (+) A431 whole cell extracts (50 µg) were separated by 10% SDS-PAGE, and the membrane was blotted with ATF1 (phospho Ser63) antibody (GTX130420) diluted at 1:5000.



**GTX130420 WB Image**

Untreated (-) and treated (+) 293T whole cell extracts (50 µg) were separated by 10% SDS-PAGE, and the membrane was blotted with ATF1 (phospho Ser63) antibody (GTX130420) diluted at 1:5000.



For full product information, images and publications, please visit our [website](#).