

IRF3 (phospho Ser386) antibody

Cat. No. GTX130422

Host	Rabbit
Clonality	Polyclonal
Isotype	IgG
Applications	WB
Reactivity	Human

References (4)

 Review (1)

Package

100 µl, 25 µl

Applications

Application Note

*Optimal dilutions/concentrations should be determined by the researcher.

Suggested dilution	Recommended dilution
WB	1:1000-1:10000
Not tested in other applications.	

Calculated MW 47 kDa. ([Note](#))

Properties

Form	Liquid
Buffer	PBS, 1% BSA, 20% Glycerol
Preservative	0.025% ProClin 300
Storage	Store as concentrated solution. Centrifuge briefly prior to opening vial. For short-term storage (1-2 weeks), store at 4°C. For long-term storage, aliquot and store at -20°C or below. Avoid multiple freeze-thaw cycles.
Concentration	1.04 mg/ml (Please refer to the vial label for the specific concentration.)
Immunogen	Carrier-protein conjugated synthetic peptide surrounding phospho Ser386 of human IRF3. The exact sequence is proprietary.
Purification	Purified by antigen-affinity chromatography.
Conjugation	Unconjugated

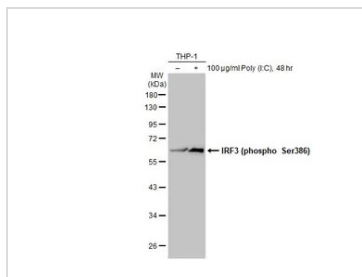
Note For laboratory research use only. Not for any clinical, therapeutic, or diagnostic use in humans or animals. Not for animal or human consumption.

Purchasers shall not, and agree not to enable third parties to, analyze, copy, reverse engineer or otherwise attempt to determine the structure or sequence of the product.



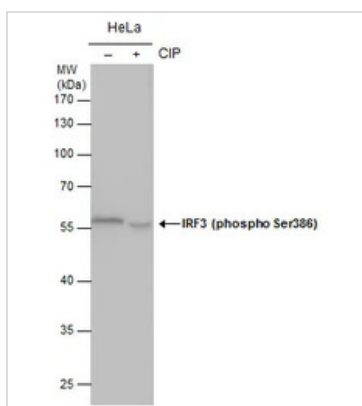
For full product information, images and publications, please visit our [website](#).

DATA IMAGES



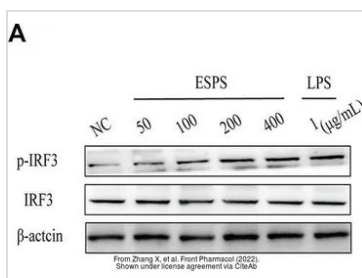
GTX130422 WB Image

Untreated (-) and treated (+) THP-1 whole cell extracts (30 µg) were separated by 10% SDS-PAGE, and the membrane was blotted with IRF3 (phospho Ser386) antibody (GTX130422) diluted at 1:500. The HRP-conjugated anti-rabbit IgG antibody (GTX213110-01) was used to detect the primary antibody.



GTX130422 WB Image

IRF3 (phospho Ser386) antibody detects IRF3 (phospho Ser386) protein by western blot analysis. Untreated (-) and treated (+, CIP treatment for 1hr) HeLa whole cell extracts (30 µg) were separated by 10% SDS-PAGE, and the membrane was blotted with IRF3 (phospho Ser386) antibody (GTX130422) at a dilution of 1:5000.



GTX130422 WB Image

The data was published in the 2022 in Front Pharmacol. [PMID: 35308231](https://pubmed.ncbi.nlm.nih.gov/35308231/)



For full product information, images and publications, please visit our [website](https://www.genetex.com).