

E-Cadherin (phospho Ser838/840) antibody

Cat. No. GTX130427

Host	Rabbit
Clonality	Polyclonal
Isotype	IgG
Applications	WB, IP
Reactivity	Human, Mouse, Rat

Package
100 µl, 25 µl

Applications

Application Note

*Optimal dilutions/concentrations should be determined by the researcher.

Suggested dilution	Recommended dilution
WB	1:500-1:3000
IP	1:72-1:500

Not tested in other applications.

Calculated MW 97 kDa. ([Note](#))

Properties

Form	Liquid
Buffer	PBS, 1% BSA, 20% Glycerol
Preservative	0.025% ProClin 300
Storage	Store as concentrated solution. Centrifuge briefly prior to opening vial. For short-term storage (1-2 weeks), store at 4°C. For long-term storage, aliquot and store at -20°C or below. Avoid multiple freeze-thaw cycles.
Concentration	0.3 mg/ml (Please refer to the vial label for the specific concentration.)
Immunogen	Carrier-protein conjugated synthetic peptide surrounding phospho Ser838/Ser840 of human E-Cadherin. The exact sequence is proprietary.
Purification	Purified by antigen-affinity chromatography.
Conjugation	Unconjugated

Note

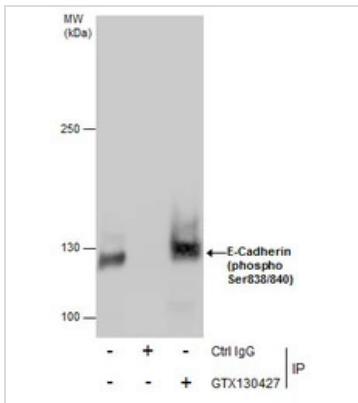
For laboratory research use only. Not for any clinical, therapeutic, or diagnostic use in humans or animals. Not for animal or human consumption.

Purchasers shall not, and agree not to enable third parties to, analyze, copy, reverse engineer or otherwise attempt to determine the structure or sequence of the product.



For full product information, images and publications, please visit our [website](#).

DATA IMAGES

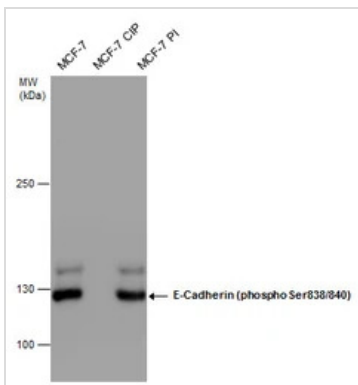


GTX130427 IP Image

Immunoprecipitation of E-Cadherin (phospho Ser838/840) protein from MCF-7 whole cell extracts using 5 µg of E-Cadherin (phospho Ser838/840) antibody (GTX130427).

Western blot analysis was performed using E-Cadherin (phospho Ser838/840) antibody (GTX130427).

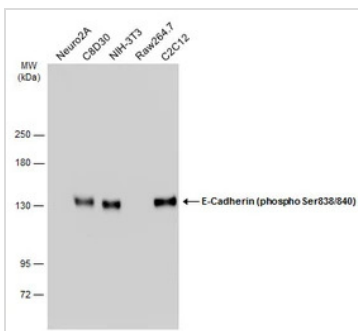
EasyBlot anti-Rabbit IgG (GTX221666-01) was used as a secondary reagent.



GTX130427 WB Image

E-Cadherin (phospho Ser838/840) antibody detects E-Cadherin (phospho Ser838/840) protein by western blot analysis. MCF-7 whole cell extract (30 µg) with the indicated treatments were separated by 5% SDS-PAGE, and the membrane was blotted with E-Cadherin (phospho Ser838/840) antibody (GTX130427) at a dilution of 1:10000.

PI : Phosphate inhibitors (pervanadate) CIP : Calf Intestinal Alkaline Phosphatase



GTX130427 WB Image

Various whole cell extracts (30 µg) were separated by 5% SDS-PAGE, and the membrane was blotted with E-Cadherin (phospho Ser838/840) antibody (GTX130427) diluted at 1:1000. The HRP-conjugated anti-rabbit IgG antibody (GTX213110-01) was used to detect the primary antibody.



For full product information, images and publications, please visit our [website](https://www.genetex.com).