

YAP1 antibody

Cat. No. GTX130444

Host	Rabbit
Clonality	Polyclonal
Isotype	IgG
Application	WB, IHC-P, IP
Reactivity	Human, Zebrafish

Package
100 µl, 25 µl

APPLICATION

Application Note

*Optimal dilutions/concentrations should be determined by the researcher.

Suggested dilution	Recommended dilution
WB	1:500-1:3000
IHC-P	Assay dependent
IP	1:100-1:500

Not tested in other applications.

Calculated MW 54 kDa. ([Note](#))

PROPERTIES

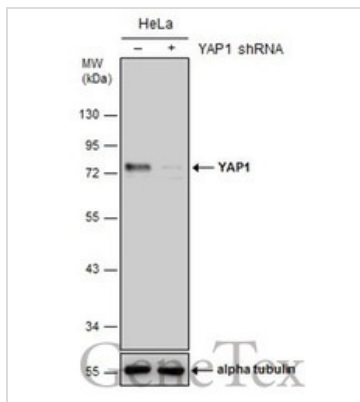
Form	Liquid
Buffer	PBS, 1% BSA, 20% Glycerol
Preservative	0.025% ProClin 300
Storage	Store as concentrated solution. Centrifuge briefly prior to opening vial. For short-term storage (1-2 weeks), store at 4°C. For long-term storage, aliquot and store at -20°C or below. Avoid multiple freeze-thaw cycles.
Concentration	1.48 mg/ml (Please refer to the vial label for the specific concentration.)
Immunogen	Carrier-protein conjugated synthetic peptide encompassing a sequence within the N-terminus region of human YAP1. The exact sequence is proprietary.
Purification	Purified by antigen-affinity chromatography.
Conjugation	Unconjugated

Note For laboratory research use only. Not for any clinical, therapeutic, or diagnostic use in humans or animals. Not for animal or human consumption.

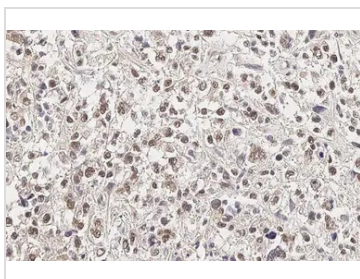
Purchasers shall not, and agree not to enable third parties to, analyze, copy, reverse engineer or otherwise attempt to determine the structure or sequence of the product.



For full product information, images and publications, please visit our [website](#).

DATA IMAGES

GTX130444 WB Image

Non-transfected (-) and transfected (+) HeLa whole cell extracts (30 µg) were separated by 10% SDS-PAGE, and the membrane was blotted with YAP1 antibody (GTX130444) diluted at 1:500.

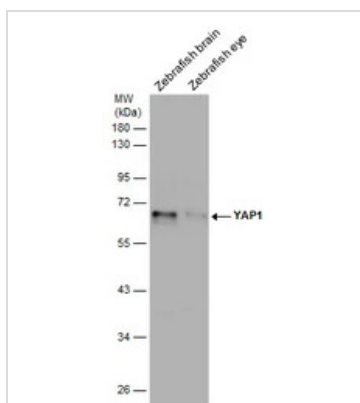

GTX130444 IHC-P Image

YAP1 antibody detects YAP1 protein at cytoplasm and nucleus by immunohistochemical analysis.

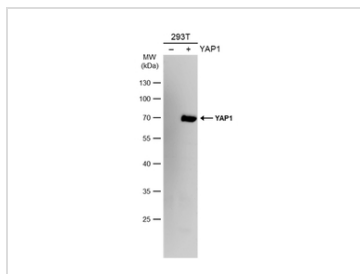
Sample: Paraffin-embedded human glioblastoma.

YAP1 stained by YAP1 antibody (GTX130444) diluted at 1:500.

Antigen Retrieval: Citrate buffer, pH 6.0, 15 min


GTX130444 WB Image

Various tissue extracts (30 µg) were separated by 10% SDS-PAGE, and the membrane was blotted with YAP1 antibody (GTX130444) diluted at 1:1000.


GTX130444 WB Image

Non-transfected (-) and transfected (+) 293T whole cell extracts (30 µg) were separated by 10% SDS-PAGE, and the membrane was blotted with YAP1 antibody (GTX130444) diluted at 1:1000. The HRP-conjugated anti-rabbit IgG antibody (GTX213110-01) was used to detect the primary antibody.



For full product information, images and publications, please visit our [website](https://www.genetex.com).