

# p120 Catenin antibody

**Cat. No. GTX130448**

|                    |            |
|--------------------|------------|
| <b>Host</b>        | Rabbit     |
| <b>Clonality</b>   | Polyclonal |
| <b>Isotype</b>     | IgG        |
| <b>Application</b> | WB         |
| <b>Reactivity</b>  | Human      |

**Package**  
100 µl, 25 µl

## APPLICATION

### Application Note

\*Optimal dilutions/concentrations should be determined by the researcher.

| Suggested dilution                | Recommended dilution |
|-----------------------------------|----------------------|
| WB                                | 1:500-1:10000        |
| Not tested in other applications. |                      |

**Calculated MW** 108 kDa. ([Note](#))

## PROPERTIES

|                      |  |
|----------------------|--|
| <b>Form</b>          | Liquid   |
| <b>Buffer</b>        | PBS, 1% BSA, 20% Glycerol  |
| <b>Preservative</b>  | 0.025% ProClin 300   |
| <b>Storage</b>       | Store as concentrated solution. Centrifuge briefly prior to opening vial. For short-term storage (1-2 weeks), store at 4°C. For long-term storage, aliquot and store at -20°C or below. Avoid multiple freeze-thaw cycles. |
| <b>Concentration</b> | 0.62 mg/ml (Please refer to the vial label for the specific concentration.)  |
| <b>Immunogen</b>     | Carrier-protein conjugated synthetic peptide encompassing a sequence within the N-terminus region of human p120 Catenin. The exact sequence is proprietary.  |
| <b>Purification</b>  | Purified by antigen-affinity chromatography.   |
| <b>Conjugation</b>   | Unconjugated   |

### Note

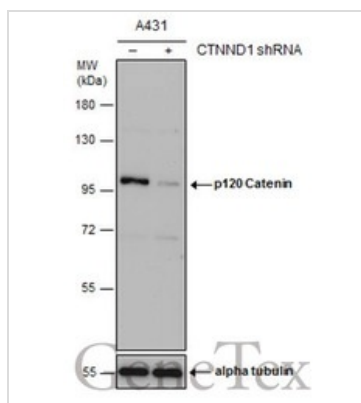
For laboratory research use only. Not for any clinical, therapeutic, or diagnostic use in humans or animals. Not for animal or human consumption.

Purchasers shall not, and agree not to enable third parties to, analyze, copy, reverse engineer or otherwise attempt to determine the structure or sequence of the product.



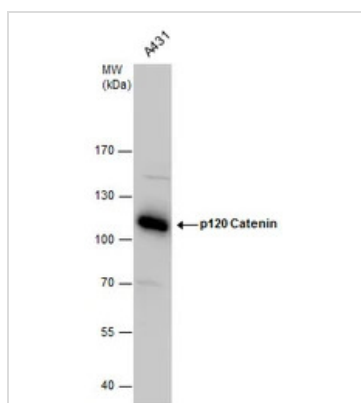
For full product information, images and publications, please visit our [website](#).

## DATA IMAGES



### GTX130448 WB Image

Non-transfected (-) and transfected (+) A431 whole cell extracts (30 µg) were separated by 7.5% SDS-PAGE, and the membrane was blotted with p120 Catenin antibody (GTX130448) diluted at 1:5000.



### GTX130448 WB Image

p120 Catenin antibody detects p120 Catenin protein by western blot analysis. Serum-starved A431 whole cell extracts (30 µg) were separated by 7.5% SDS-PAGE, and the membrane was blotted with p120 Catenin antibody (GTX130448) at a dilution of 1:1000.



For full product information, images and publications, please visit our [website](https://www.genetex.com).