

## PKC alpha antibody

Cat. No. GTX130453

Host	Rabbit
Clonality	Polyclonal
Isotype	IgG
Applications	WB, ICC/IF, IHC-Fr
Reactivity	Human, Mouse, Rat, Zebrafish

References ( 7 )

Package

100 µl, 25 µl

## Applications

## Application Note

\*Optimal dilutions/concentrations should be determined by the researcher.

Suggested dilution	Recommended dilution
WB	1:500-1:3000
ICC/IF	1:100-1:1000
IHC-Fr	1:100-1:1000

Not tested in other applications.

Calculated MW	77 kDa. ( <a href="#">Note</a> )
Product Note	Based on sequence homology, this antibody may cross react with PKC beta and PKC gamma protein.

## Properties

Form	Liquid
Buffer	PBS, 20% Glycerol
Preservative	0.025% ProClin 300
Storage	Store as concentrated solution. Centrifuge briefly prior to opening vial. For short-term storage (1-2 weeks), store at 4°C. For long-term storage, aliquot and store at -20°C or below. Avoid multiple freeze-thaw cycles.
Concentration	1.25 mg/ml (Please refer to the vial label for the specific concentration.)
Immunogen	Carrier-protein conjugated synthetic peptide encompassing a sequence within the C-terminus region of human PKC alpha. The exact sequence is proprietary.
Purification	Purified by antigen-affinity chromatography.
Conjugation	Unconjugated



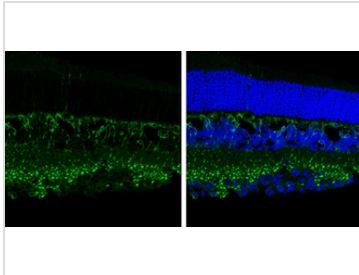
For full product information, images and publications, please visit our [website](#).

For laboratory research use only. Not for any clinical, therapeutic, or diagnostic use in humans or animals. Not for animal or human consumption.

## Note

Purchasers shall not, and agree not to enable third parties to, analyze, copy, reverse engineer or otherwise attempt to determine the structure or sequence of the product.

## DATA IMAGES



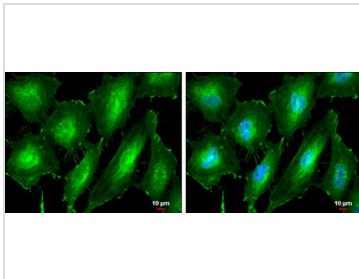
### GTx130453 IHC-Fr Image

PKC alpha antibody detects PKC alpha protein in the rod bipolar cells by immunohistochemical analysis.

Sample: Frozen sectioned adult mouse retina.

Green: PKC alpha protein stained by PKC alpha antibody (GTx130453) diluted at 1:250.

Blue: Fluoroshield with DAPI (GTx30920).



### GTx130453 ICC/IF Image

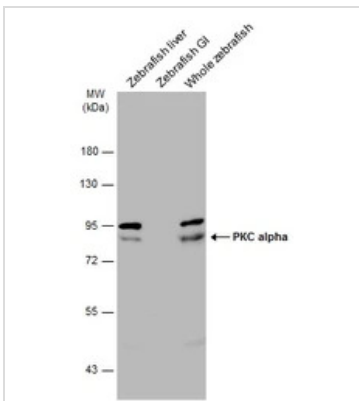
PKC alpha antibody detects PKC alpha protein at cell membrane and cytoplasm by immunofluorescent analysis.

Sample: HeLa cells were fixed in 4% paraformaldehyde at RT for 15 min.

Green: PKC alpha protein stained by PKC alpha antibody (GTx130453) diluted at 1:500.

Blue: Hoechst 33342 staining.

Scale bar = 10  $\mu$ m.



### GTx130453 WB Image

Various tissue extracts (30  $\mu$ g) were separated by 7.5% SDS-PAGE, and the membrane was blotted with PKC alpha antibody (GTx130453) diluted at 1:2000. The HRP-conjugated anti-rabbit IgG antibody (GTx213110-01) was used to detect the primary antibody, and the signal was developed with Trident ECL plus-Enhanced. (GI: gastrointestinal)



For full product information, images and publications, please visit our [website](https://www.genetex.com).