

Tau antibody

Cat. No. GTX130462

Host	Rabbit
Clonality	Polyclonal
Isotype	IgG
Applications	WB, ICC/IF, IHC-P, IHC-Fr
Reactivity	Human, Mouse, Rat

References (7)

Package

100 µl, 25 µl

PRODUCT

Summary

Tau antibody detects Tau protein, a phosphorylated microtubule-associated protein with a predicted molecular weight of 79 kDa. Tau protein has six isoforms in humans generated from a single gene. Expression changes of these Tau isoforms are controlled during neuronal development and in various pathological conditions. Dysfunction of Tau is associated with neurodegenerative diseases including Alzheimer's disease and frontotemporal dementia.

Applications

Application Note

*Optimal dilutions/concentrations should be determined by the researcher.

Suggested dilution	Recommended dilution
WB	1:500-1:3000
ICC/IF	1:100-1:1000
IHC-P	1:100-1:1000
IHC-Fr	1:100-1:1000

Not tested in other applications.

Calculated MW 79 kDa. ([Note](#))

Properties

Form	Liquid
Buffer	PBS, 1% BSA, 20% Glycerol
Preservative	0.025% ProClin 300
Storage	Store as concentrated solution. Centrifuge briefly prior to opening vial. For short-term storage (1-2 weeks), store at 4°C. For long-term storage, aliquot and store at -20°C or below. Avoid multiple freeze-thaw cycles.
Concentration	0.47 mg/ml (Please refer to the vial label for the specific concentration.)
Immunogen	Carrier-protein conjugated synthetic peptide encompassing a sequence within the C-terminus region of human Tau. The exact sequence is proprietary.
Purification	Purified by antigen-affinity chromatography.



For full product information, images and publications, please visit our [website](#).

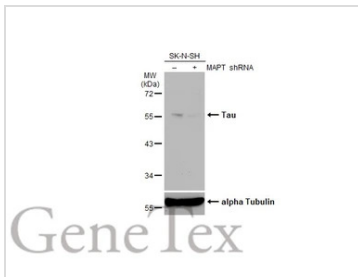
Conjugation

Unconjugated

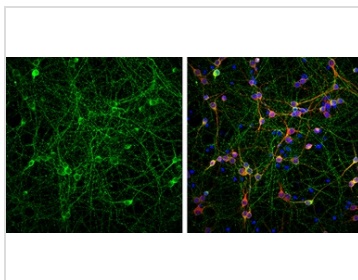
Note

For laboratory research use only. Not for any clinical, therapeutic, or diagnostic use in humans or animals. Not for animal or human consumption.

Purchasers shall not, and agree not to enable third parties to, analyze, copy, reverse engineer or otherwise attempt to determine the structure or sequence of the product.

DATA IMAGES

GTK130462 WB Image

Non-transfected (–) and transfected (+) SK-N-SH whole cell extracts (30 µg) were separated by 10% SDS-PAGE, and the membrane was blotted with Tau antibody (GTK130462) diluted at 1:500. The HRP-conjugated anti-rabbit IgG antibody (GTK213110-01) was used to detect the primary antibody, and the signal was developed with Trident ECL plus-Enhanced.


GTK130462 ICC/IF Image

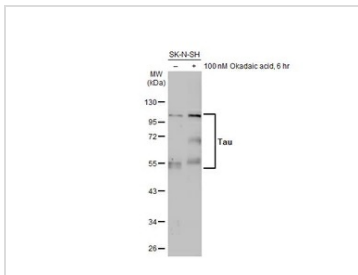
Tau antibody detects Tau protein at axon by immunofluorescent analysis.

Sample: DIV9 rat E18 primary cortical neurons were fixed in 4% paraformaldehyde at RT for 15 min.

Green: Tau protein stained by Tau antibody (GTK130462) diluted at 1:500.

Red: MAP2, stained by MAP2 antibody [HM-2] (GTK11267) diluted at 1:1000.

Blue: Fluoroshield with DAPI (GTK30920).


GTK130462 WB Image

Untreated (–) and treated (+) SK-N-SH whole cell extract (30 µg) were separated by 10% SDS-PAGE, and the membrane was blotted with Tau antibody (GTK130462) diluted at 1:1000. The HRP-conjugated anti-rabbit IgG antibody (GTK213110-01) was used to detect the primary antibody, and the signal was developed with Trident ECL plus-Enhanced.


 For full product information, images and publications, please visit our [website](https://www.genetex.com).