

Gemin 5 antibody

Cat. No. GTX130498

Host	Rabbit
Clonality	Polyclonal
Isotype	IgG
Applications	WB, ICC/IF, IHC-P, IP
Reactivity	Human, Mouse

References (2)

Package

100 µl, 25 µl

Applications

Application Note

*Optimal dilutions/concentrations should be determined by the researcher.

Suggested dilution	Recommended dilution
WB	1:500-1:3000
ICC/IF	1:100-1:1000
IHC-P	1:100-1:1000
IP	1:100-1:500

Not tested in other applications.

Calculated MW 169 kDa. ([Note](#))

Properties

Form	Liquid
Buffer	PBS, 20% Glycerol
Preservative	0.025% ProClin 300
Storage	Store as concentrated solution. Centrifuge briefly prior to opening vial. For short-term storage (1-2 weeks), store at 4°C. For long-term storage, aliquot and store at -20°C or below. Avoid multiple freeze-thaw cycles.
Concentration	1.43 mg/ml (Please refer to the vial label for the specific concentration.)
Immunogen	Recombinant protein encompassing a sequence within the C-terminus region of human Gemin 5. The exact sequence is proprietary.
Purification	Purified by antigen-affinity chromatography.
Conjugation	Unconjugated



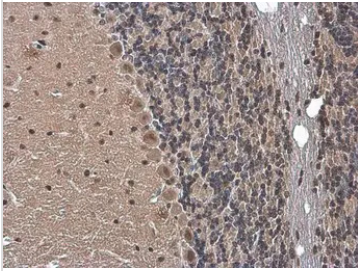
For full product information, images and publications, please visit our [website](#).

For laboratory research use only. Not for any clinical, therapeutic, or diagnostic use in humans or animals. Not for animal or human consumption.

Note

Purchasers shall not, and agree not to enable third parties to, analyze, copy, reverse engineer or otherwise attempt to determine the structure or sequence of the product.

DATA IMAGES



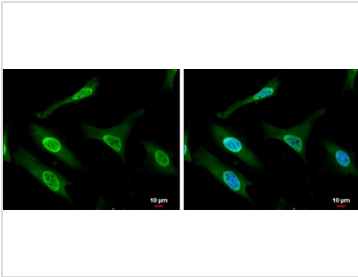
GTX130498 IHC-P Image

Gemin 5 antibody detects Gemin 5 protein at cytoplasm and nucleus by immunohistochemical analysis.

Sample: Paraffin-embedded mouse brain.

Gemin 5 stained by Gemin 5 antibody (GTX130498) diluted at 1:500.

Antigen Retrieval: Citrate buffer, pH 6.0, 15 min



GTX130498 ICC/IF Image

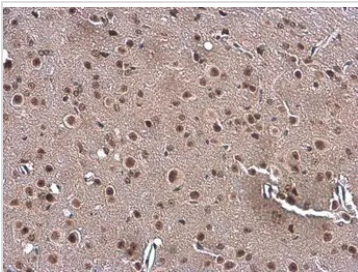
Gemin 5 antibody detects Gemin 5 protein at cytoplasm and nucleus by immunofluorescent analysis.

Sample: HeLa cells were fixed in 4% paraformaldehyde at RT for 15 min.

Green: Gemin 5 protein stained by Gemin 5 antibody (GTX130498) diluted at 1:500.

Blue: Hoechst 33342 staining.

Scale bar = 10 μm.



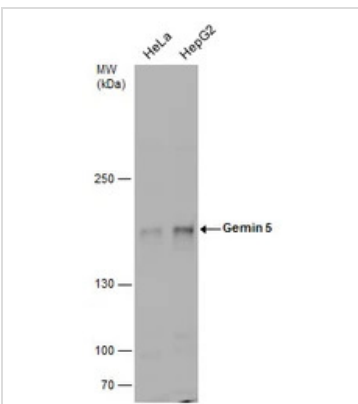
GTX130498 IHC-P Image

Gemin 5 antibody detects Gemin 5 protein at cytoplasm and nucleus by immunohistochemical analysis.

Sample: Paraffin-embedded mouse brain.

Gemin 5 stained by Gemin 5 antibody (GTX130498) diluted at 1:500.

Antigen Retrieval: Citrate buffer, pH 6.0, 15 min



GTX130498 WB Image

Gemin 5 antibody detects Gemin 5 protein by western blot analysis. Various whole cell extracts (30 μg) were separated by 5% SDS-PAGE, and the membrane was blotted with Gemin 5 antibody (GTX130498) diluted at a dilution of 1:500.



For full product information, images and publications, please visit our [website](https://www.genetex.com).