

IL10 antibody

Cat. No. GTX130513

Host	Rabbit
Clonality	Polyclonal
Isotype	IgG
Applications	WB, ICC/IF, IHC-P, IHC-Fr, ELISA
Reactivity	Human, Mouse

References (5)

★★★★☆ Review (2)

Package

100 µl, 25 µl

Applications

Application Note

*Optimal dilutions/concentrations should be determined by the researcher.

Suggested dilution	Recommended dilution
WB	1:1000-1:10000
ICC/IF	Assay dependent
IHC-P	Assay dependent
IHC-Fr	1:100-1:1000
ELISA	1:-1:10000

Not tested in other applications.

Calculated MW 21 kDa. ([Note](#))

Properties

Form	Liquid
Buffer	PBS, 20% Glycerol
Preservative	0.025% ProClin 300
Storage	Store as concentrated solution. Centrifuge briefly prior to opening vial. For short-term storage (1-2 weeks), store at 4°C. For long-term storage, aliquot and store at -20°C or below. Avoid multiple freeze-thaw cycles.
Concentration	1.17 mg/ml (Please refer to the vial label for the specific concentration.)
Immunogen	Carrier-protein conjugated synthetic peptide encompassing a sequence within the N-terminus region of human IL10. The exact sequence is proprietary.
Purification	Purified by antigen-affinity chromatography.
Conjugation	Unconjugated

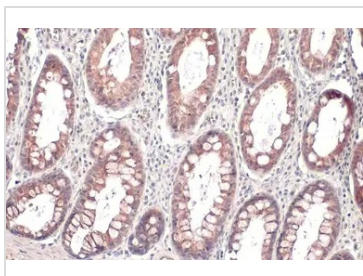
For full product information, images and publications, please visit our [website](#).

For laboratory research use only. Not for any clinical, therapeutic, or diagnostic use in humans or animals. Not for animal or human consumption.

Note

Purchasers shall not, and agree not to enable third parties to, analyze, copy, reverse engineer or otherwise attempt to determine the structure or sequence of the product.

DATA IMAGES



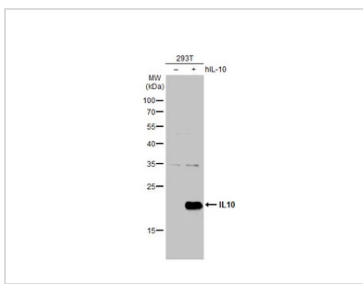
GTX130513 IHC-P Image

IL10 antibody detects IL10 protein at nucleus by immunohistochemical analysis.

Sample: Paraffin-embedded human colon.

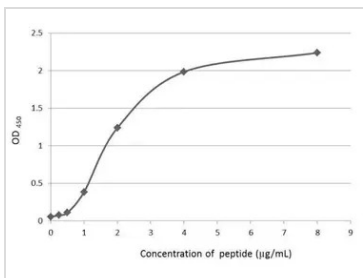
IL10 stained by IL10 antibody (GTX130513) diluted at 1:500.

Antigen Retrieval: Citrate buffer, pH 6.0, 15 min



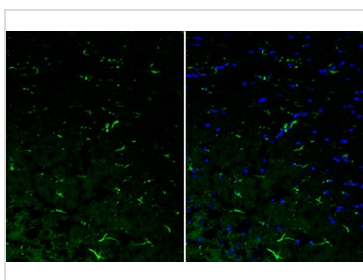
GTX130513 WB Image

Non-transfected (-) and transfected (+) 293T whole cell extracts (30 µg) were separated by 12% SDS-PAGE, and the membrane was blotted with IL10 antibody (GTX130513) diluted at 1:5000. The HRP-conjugated anti-rabbit IgG antibody (GTX213110-01) was used to detect the primary antibody.



GTX130513 ELISA Image

An ELISA plate is coated with 50 µL of a IL10 peptide at concentration ranged from 0.25 µg/mL to 8 µg/mL. The coated peptide is detected with anti IL10 antibody (GTX130513) at 0.5 µg/mL.



GTX130513 IHC-Fr Image

IL10 antibody detects IL10 protein by immunohistochemical analysis.

Sample: Frozen-sectioned mouse hippocampus.

Green: IL10 stained by IL10 antibody (GTX130513) diluted at 1:250.

Blue: Fluoroshield with DAPI (GTX30920).



For full product information, images and publications, please visit our [website](#).