

SLC7A9 antibody

Cat. No. GTX130516

Host	Rabbit
Clonality	Polyclonal
Isotype	IgG
Applications	WB
Reactivity	Human

Package
100 µl, 25 µl

Applications

Application Note

*Optimal dilutions/concentrations should be determined by the researcher.

Suggested dilution	Recommended dilution
--------------------	----------------------

WB	1:500-1:3000
----	--------------

Not tested in other applications.

Calculated MW	53 kDa. (Note)
----------------------	----------------------------------

Properties

Form	Liquid
-------------	--------

Buffer	PBS, 20% Glycerol
---------------	-------------------

Preservative	0.025% ProClin 300
---------------------	--------------------

Storage	Store as concentrated solution. Centrifuge briefly prior to opening vial. For short-term storage (1-2 weeks), store at 4°C. For long-term storage, aliquot and store at -20°C or below. Avoid multiple freeze-thaw cycles.
----------------	--

Concentration	1.3 mg/ml (Please refer to the vial label for the specific concentration.)
----------------------	--

Immunogen	Synthetic peptide encompassing a sequence within the Intracellular domain of human SLC7A9. The exact sequence is proprietary.
------------------	---

Purification	Purified by antigen-affinity chromatography.
---------------------	--

Conjugation	Unconjugated
--------------------	--------------

For laboratory research use only. Not for any clinical, therapeutic, or diagnostic use in humans or animals. Not for animal or human consumption.

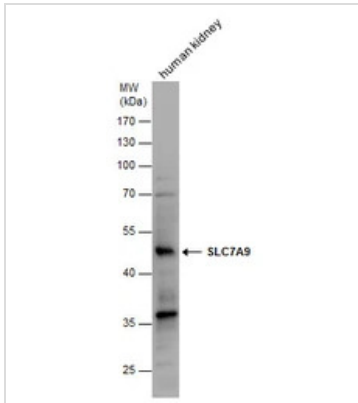
Note

Purchasers shall not, and agree not to enable third parties to, analyze, copy, reverse engineer or otherwise attempt to determine the structure or sequence of the product.



For full product information, images and publications, please visit our [website](#).

DATA IMAGES

**GTX130516 WB Image**

SLC7A9 antibody detects SLC7A9 protein by western blot analysis. Human tissue extracts (30 µg) was separated by 10 % SDS-PAGE, and the membrane was blotted with SLC7A9 antibody (GTX130516) at a dilution of 1:500.



For full product information, images and publications, please visit our [website](#).