

BRD4 antibody

Cat. No. GTX130586

Host	Rabbit
Clonality	Polyclonal
Isotype	IgG
Applications	WB, ICC/IF, IHC-P, IP
Reactivity	Human, Mouse, Rat

References (5)

★★★★☆ Review (2)

Package

100 µl, 25 µl

Applications

Application Note

*Optimal dilutions/concentrations should be determined by the researcher.

Suggested dilution	Recommended dilution
WB	1:500-1:3000
ICC/IF	Assay dependent
IHC-P	Assay dependent
IP	Assay dependent

Not tested in other applications.

Calculated MW 152 kDa. ([Note](#))

Properties

Form	Liquid
Buffer	PBS, 1% BSA, 20% Glycerol
Preservative	0.025% ProClin 300
Storage	Store as concentrated solution. Centrifuge briefly prior to opening vial. For short-term storage (1-2 weeks), store at 4°C. For long-term storage, aliquot and store at -20°C or below. Avoid multiple freeze-thaw cycles.
Concentration	0.48 mg/ml (Please refer to the vial label for the specific concentration.)
Immunogen	Recombinant protein encompassing a sequence within the C-terminus region of human BRD4 . The exact sequence is proprietary.
Purification	Purified by antigen-affinity chromatography.
Conjugation	Unconjugated

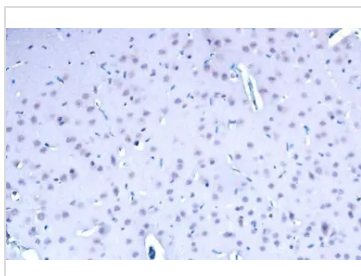


For full product information, images and publications, please visit our [website](#).

For laboratory research use only. Not for any clinical, therapeutic, or diagnostic use in humans or animals. Not for animal or human consumption.

Note

Purchasers shall not, and agree not to enable third parties to, analyze, copy, reverse engineer or otherwise attempt to determine the structure or sequence of the product.

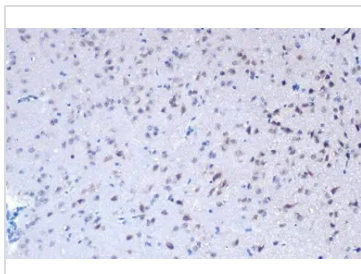
DATA IMAGES

GTx130586 IHC-P Image

BRD4 antibody detects BRD4 protein at nucleus by immunohistochemical analysis.

Sample: Paraffin-embedded rat brain.

BRD4 stained by BRD4 antibody (GTx130586) diluted at 1:500.

Antigen Retrieval: Citrate buffer, pH 6.0, 15 min

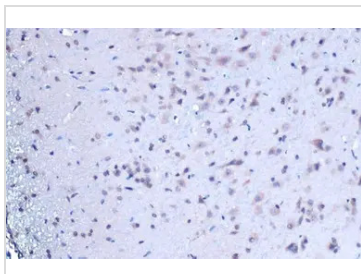

GTx130586 IHC-P Image

BRD4 antibody detects BRD4 protein at nucleus by immunohistochemical analysis.

Sample: Paraffin-embedded mouse brain.

BRD4 stained by BRD4 antibody (GTx130586) diluted at 1:500.

Antigen Retrieval: Citrate buffer, pH 6.0, 15 min

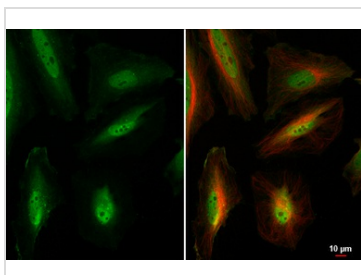

GTx130586 IHC-P Image

BRD4 antibody detects BRD4 protein at nucleus by immunohistochemical analysis.

Sample: Paraffin-embedded rat brain.

BRD4 stained by BRD4 antibody (GTx130586) diluted at 1:500.

Antigen Retrieval: Citrate buffer, pH 6.0, 15 min


GTx130586 ICC/IF Image

BRD4 antibody detects BRD4 protein at cytoplasm and nucleus by immunofluorescent analysis.

Sample: HeLa cells were fixed in 4% paraformaldehyde at RT for 15 min.

Green: BRD4 stained by BRD4 antibody (GTx130586) diluted at 1:500.

Red: alpha Tubulin, a cytoskeleton marker, stained by alpha Tubulin antibody [GT114] (GTx628802) diluted at 1:1000.



For full product information, images and publications, please visit our [website](#).