

## Uteroglobin antibody

Cat. No. GTX130640

Host	Rabbit
Clonality	Polyclonal
Isotype	IgG
Application	WB, IHC-P
Reactivity	Human, Mouse, Rat

Package  
100 µl, 25 µl

## APPLICATION

## Application Note

\*Optimal dilutions/concentrations should be determined by the researcher.

Suggested dilution	Recommended dilution
WB	1:500-1:10000
IHC-P	1:100-1:1000

Not tested in other applications.

Calculated MW 10 kDa. ( [Note](#) )

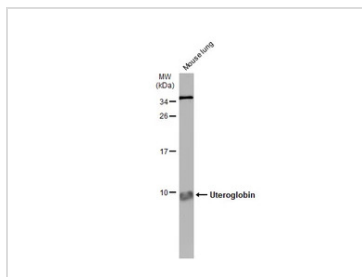
## PROPERTIES

Form	Liquid
Buffer	PBS, 20% Glycerol
Preservative	0.025% ProClin 300
Storage	Store as concentrated solution. Centrifuge briefly prior to opening vial. For short-term storage (1-2 weeks), store at 4°C. For long-term storage, aliquot and store at -20°C or below. Avoid multiple freeze-thaw cycles.
Concentration	1.1 mg/ml (Please refer to the vial label for the specific concentration.)
Immunogen	Recombinant protein encompassing a sequence within the center region of human Uteroglobin. The exact sequence is proprietary.
Purification	Purified by antigen-affinity chromatography.
Conjugation	Unconjugated
Note	<p>For laboratory research use only. Not for any clinical, therapeutic, or diagnostic use in humans or animals. Not for animal or human consumption.</p> <p>Purchasers shall not, and agree not to enable third parties to, analyze, copy, reverse engineer or otherwise attempt to determine the structure or sequence of the product.</p>

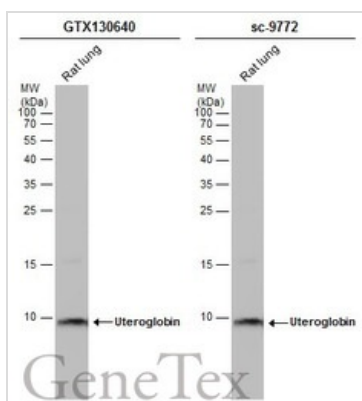


For full product information, images and publications, please visit our [website](#).

## DATA IMAGES

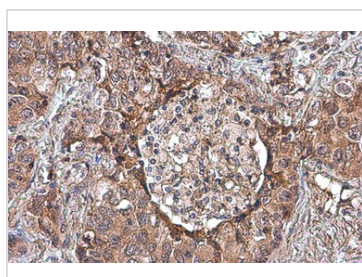

**GTKX130640 WB Image**

Mouse tissue extract (50 µg) was separated by 15% SDS-PAGE, and the membrane was blotted with Uteroglobin antibody (GTKX130640) diluted at 1:500. The HRP-conjugated anti-rabbit IgG antibody (GTKX213110-01) was used to detect the primary antibody.


**GTKX130640 WB Image**

Rat tissue extract (50 µg) was separated by 15% SDS-PAGE, and the membranes were blotted with Uteroglobin antibody (GTKX130640) diluted at 1:2000 and competitor's antibody (sc-9772) diluted at 1:1000. The HRP-conjugated anti-rabbit IgG antibody (GTKX213110-01) was used to detect the primary antibody.

\*The competitor is not affiliated with GeneTex and does not endorse this product.

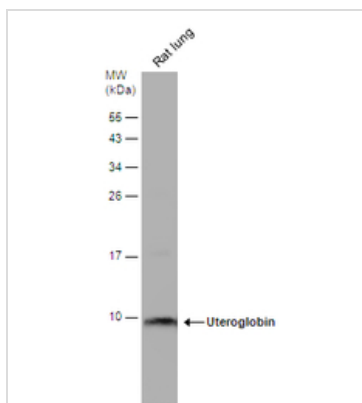

**GTKX130640 IHC-P Image**

Uteroglobin antibody detects Uteroglobin protein at cytoplasm by immunohistochemical analysis.

Sample: Paraffin-embedded human lung cancer.

Uteroglobin stained by Uteroglobin antibody (GTKX130640) diluted at 1:500.

Antigen Retrieval: Citrate buffer, pH 6.0, 15 min


**GTKX130640 WB Image**

Rat tissue extract (50 µg) was separated by 15% SDS-PAGE, and the membrane was blotted with Uteroglobin antibody (GTKX130640) diluted at 1:2000. The HRP-conjugated anti-rabbit IgG antibody (GTKX213110-01) was used to detect the primary antibody.



For full product information, images and publications, please visit our [website](https://www.genetex.com).