

## NPFF1 receptor antibody

Cat. No. GTX13066

Host	Rabbit
Clonality	Polyclonal
Isotype	IgG
Application	IHC-P
Reactivity	Human

Package

25 µg

## APPLICATION

## Application Note

\*Optimal dilutions/concentrations should be determined by the researcher.

Suggested dilution	Recommended dilution
IHC-P	20 - 40 µg/ml
Not tested in other applications.	

Calculated MW 48 kDa. ( [Note](#) )

## PROPERTIES

Form	Liquid
Buffer	PBS
Preservative	0.1% Sodium azide
Storage	Store as concentrated solution. Centrifuge briefly prior to opening vial. For short-term storage (1-2 weeks), store at 4°C. For long-term storage, aliquot and store at -20°C or below. Avoid multiple freeze-thaw cycles.
Concentration	1 mg/ml (Please refer to the vial label for the specific concentration.)
Immunogen	Synthetic 20 amino acid peptide from C-terminus of human NPFF1 Receptor.
Purification	Purified by affinity chromatography
Conjugation	Unconjugated

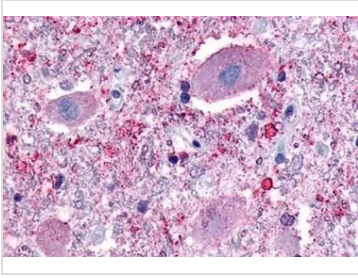
## Note

For laboratory research use only. Not for any clinical, therapeutic, or diagnostic use in humans or animals. Not for animal or human consumption.

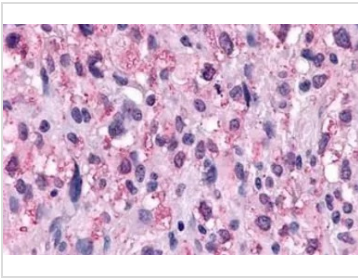
Purchasers shall not, and agree not to enable third parties to, analyze, copy, reverse engineer or otherwise attempt to determine the structure or sequence of the product.



For full product information, images and publications, please visit our [website](#).

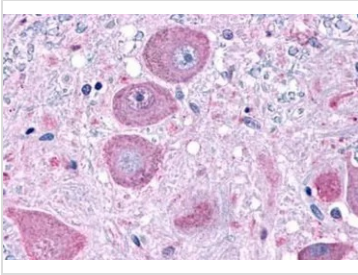
**DATA IMAGES**

**GTX13066 IHC-P Image**

IHC-P analysis of spinal cord, ventral horn neurons tissue using GTX13066 NPFF1 receptor antibody.

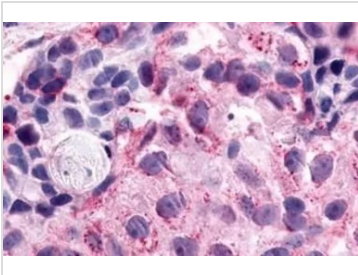

**GTX13066 IHC-P Image**

IHC-P analysis of human brain, glioblastoma tissue using GTX13066 NPFF1 receptor antibody.

Antigen retrieval : Heat-induced antigen retrieval

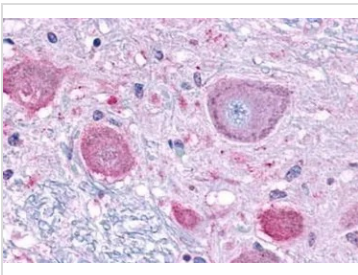

**GTX13066 IHC-P Image**

IHC-P analysis of brain, medulla, neurons within lateral cuneate nucleus tissue using GTX13066 NPFF1 receptor antibody.


**GTX13066 IHC-P Image**

IHC-P analysis of human breast, carcinoma tissue using GTX13066 NPFF1 receptor antibody.

Antigen retrieval : Heat-induced antigen retrieval


**GTX13066 IHC-P Image**

IHC-P analysis of human brain, neurons tissue using GTX13066 NPFF1 receptor antibody.

Antigen retrieval : Heat-induced antigen retrieval



For full product information, images and publications, please visit our [website](https://www.genetex.com).