

Myogenin antibody

Cat. No. GTX130733

Host	Rabbit
Clonality	Polyclonal
Isotype	IgG
Applications	WB
Reactivity	Human

Package
100 µl, 25 µl

Applications

Application Note

*Optimal dilutions/concentrations should be determined by the researcher.

Suggested dilution	Recommended dilution
--------------------	----------------------

WB	1:500-1:3000
----	--------------

Not tested in other applications.

Calculated MW	25 kDa. (Note)
----------------------	----------------------------------

Properties

Form	Liquid
-------------	--------

Buffer	PBS, 20% Glycerol
---------------	-------------------

Preservative	0.025% ProClin 300
---------------------	--------------------

Storage	Store as concentrated solution. Centrifuge briefly prior to opening vial. For short-term storage (1-2 weeks), store at 4°C. For long-term storage, aliquot and store at -20°C or below. Avoid multiple freeze-thaw cycles.
----------------	--

Concentration	0.51 mg/ml (Please refer to the vial label for the specific concentration.)
----------------------	---

Immunogen	Recombinant protein encompassing a sequence within the center region of human Myogenin. The exact sequence is proprietary.
------------------	--

Purification	Purified by antigen-affinity chromatography.
---------------------	--

Conjugation	Unconjugated
--------------------	--------------

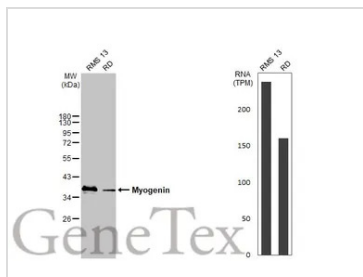
For laboratory research use only. Not for any clinical, therapeutic, or diagnostic use in humans or animals. Not for animal or human consumption.

Note

Purchasers shall not, and agree not to enable third parties to, analyze, copy, reverse engineer or otherwise attempt to determine the structure or sequence of the product.



For full product information, images and publications, please visit our [website](#).

DATA IMAGES

GTX130733 WB Image

Various whole cell extracts (30 µg) were separated by 12% SDS-PAGE, and the membrane was blotted with Myogenin antibody (GTX130733) diluted at 1:1000. The HRP-conjugated anti-rabbit IgG antibody (GTX213110-01) was used to detect the primary antibody. Corresponding RNA expression data for the same cell lines are based on Human Protein Atlas program.



For full product information, images and publications, please visit our [website](#).