

# POU4F3 antibody

**Cat. No. GTX130748**

<b>Host</b>	Rabbit
<b>Clonality</b>	Polyclonal
<b>Isotype</b>	IgG
<b>Applications</b>	WB, IHC-P
<b>Reactivity</b>	Human, Mouse

References ( 1 )

Package

100 µl, 25 µl

## Applications

### Application Note

\*Optimal dilutions/concentrations should be determined by the researcher.

Suggested dilution	Recommended dilution
WB	1:500-1:3000
IHC-P	1:100-1:1000

Not tested in other applications.

**Calculated MW** 37 kDa. ( [Note](#) )

## Properties

<b>Form</b>	Liquid
<b>Buffer</b>	PBS, 20% Glycerol
<b>Preservative</b>	0.025% ProClin 300
<b>Storage</b>	Store as concentrated solution. Centrifuge briefly prior to opening vial. For short-term storage (1-2 weeks), store at 4°C. For long-term storage, aliquot and store at -20°C or below. Avoid multiple freeze-thaw cycles.
<b>Concentration</b>	1.11 mg/ml (Please refer to the vial label for the specific concentration.)
<b>Immunogen</b>	Recombinant protein encompassing a sequence within the center region of human POU4F3. The exact sequence is proprietary.
<b>Purification</b>	Purified by antigen-affinity chromatography.
<b>Conjugation</b>	Unconjugated

### Note

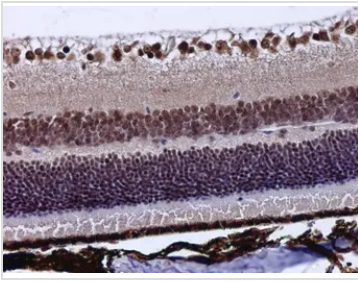
For laboratory research use only. Not for any clinical, therapeutic, or diagnostic use in humans or animals. Not for animal or human consumption.

Purchasers shall not, and agree not to enable third parties to, analyze, copy, reverse engineer or otherwise attempt to determine the structure or sequence of the product.



For full product information, images and publications, please visit our [website](#).

## DATA IMAGES



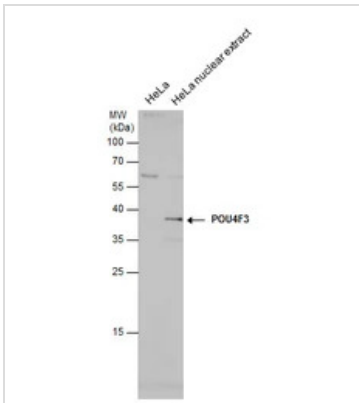
### GTX130748 IHC-P Image

POU4F3 antibody detects POU4F3 protein at cytoplasm and nucleus in mouse eye by immunohistochemical analysis.

Sample: Paraffin-embedded mouse eye.

POU4F3 antibody (GTX130748) diluted at 1:500.

Antigen Retrieval: Citrate buffer, pH 6.0, 15 min



### GTX130748 WB Image

POU4F3 antibody detects POU4F3 protein by western blot analysis. HeLa whole cell extracts and nuclear extracts (30 µg) were separated by 12% SDS-PAGE, and the membrane was blotted with POU4F3 antibody (GTX130748) diluted at 1:1000.



For full product information, images and publications, please visit our [website](https://www.genetex.com).