

SNF2H antibody

Cat. No. GTX130794

Host	Rabbit
Clonality	Polyclonal
Isotype	IgG
Applications	WB, ICC/IF, IHC-P
Reactivity	Human, Rat

Package
100 µl, 25 µl

Applications

Application Note

*Optimal dilutions/concentrations should be determined by the researcher.

Suggested dilution	Recommended dilution
WB	1:5000-1:20000
ICC/IF	1:100-1:1000
IHC-P	1:100-1:1000

Not tested in other applications.

Calculated MW 122 kDa. ([Note](#))

Properties

Form	Liquid
Buffer	PBS, 1% BSA, 20% Glycerol
Preservative	0.025% ProClin 300
Storage	Store as concentrated solution. Centrifuge briefly prior to opening vial. For short-term storage (1-2 weeks), store at 4°C. For long-term storage, aliquot and store at -20°C or below. Avoid multiple freeze-thaw cycles.
Concentration	0.28 mg/ml (Please refer to the vial label for the specific concentration.)
Immunogen	Recombinant protein encompassing a sequence within the N-terminus region of human SNF2H. The exact sequence is proprietary.
Purification	Purified by antigen-affinity chromatography.
Conjugation	Unconjugated

Note

For laboratory research use only. Not for any clinical, therapeutic, or diagnostic use in humans or animals. Not for animal or human consumption.

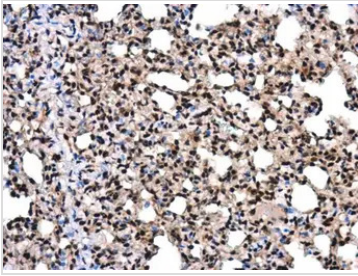
Purchasers shall not, and agree not to enable third parties to, analyze, copy, reverse engineer or otherwise attempt to determine the structure or sequence of the product.



For full product information, images and publications, please visit our [website](#).

Date 2026 / 01 / 06 Page 1 of 2

DATA IMAGES



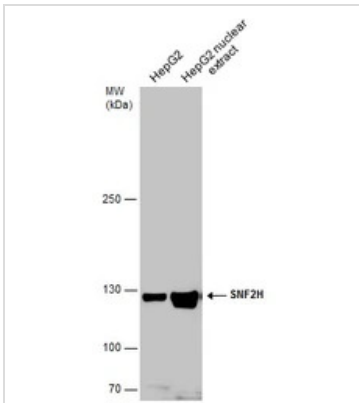
GTX130794 IHC-P Image

SNF2H antibody detects SNF2H protein at nucleus in rat lung by immunohistochemical analysis.

Sample: Paraffin-embedded rat lung.

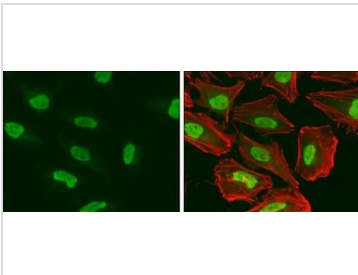
SNF2H antibody (GTX130794) diluted at 1:400.

Antigen Retrieval: Citrate buffer, pH 6.0, 15 min



GTX130794 WB Image

HepG2 whole cell and nuclear extracts (30 µg) were separated by 5% SDS-PAGE, and the membrane was blotted with SNF2H antibody (GTX130794) diluted at 1:10000.



GTX130794 ICC/IF Image

SNF2H antibody detects SNF2H protein at nucleus by immunofluorescent analysis.

Sample: HeLa cells were fixed in 4% paraformaldehyde at RT for 15 min.

Green: SNF2H protein stained by SNF2H antibody (GTX130794) diluted at 1:500.

Red: phalloidin, a cytoskeleton marker, diluted at 1:50.



For full product information, images and publications, please visit our [website](https://www.genetex.com).