

Nectin 1 antibody

Cat. No. GTX130824

Host	Rabbit
Clonality	Polyclonal
Isotype	IgG
Applications	WB, ICC/IF
Reactivity	Human, Rat

References (1)

Package

100 µl, 25 µl

Applications

Application Note

*Optimal dilutions/concentrations should be determined by the researcher.

Suggested dilution	Recommended dilution
WB	1:500-1:3000
ICC/IF	1:100-1:1000

Not tested in other applications.

Calculated MW 57 kDa. ([Note](#))

Properties

Form	Liquid
Buffer	PBS, 20% Glycerol
Preservative	0.025% ProClin 300
Storage	Store as concentrated solution. Centrifuge briefly prior to opening vial. For short-term storage (1-2 weeks), store at 4°C. For long-term storage, aliquot and store at -20°C or below. Avoid multiple freeze-thaw cycles.
Concentration	1.44 mg/ml (Please refer to the vial label for the specific concentration.)
Immunogen	Recombinant protein encompassing a sequence within the Extracellular domain of human PVRL1. The exact sequence is proprietary.
Purification	Purified by antigen-affinity chromatography.
Conjugation	Unconjugated

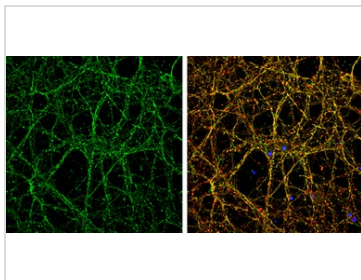
Note

For laboratory research use only. Not for any clinical, therapeutic, or diagnostic use in humans or animals. Not for animal or human consumption.

Purchasers shall not, and agree not to enable third parties to, analyze, copy, reverse engineer or otherwise attempt to determine the structure or sequence of the product.

For full product information, images and publications, please visit our [website](#).

DATA IMAGES



GTXTX130824 ICC/IF Image

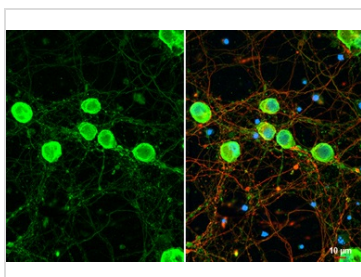
Nectin 1 antibody detects Nectin 1 protein by immunofluorescent analysis.

Sample: DIV14 rat E18 primary cortical neurons were fixed in 4% paraformaldehyde at RT for 15 min.

Green: Nectin 1 protein stained by Nectin 1 antibody (GTXTX130824) diluted at 1:500.

Red: beta Tubulin 3/ Tuj1, stained by beta Tubulin 3/ Tuj1 antibody [GT1338] (GTXTX631831) diluted at 1:500.

Blue: Fluoroshield with DAPI (GTXTX30920).



GTXTX130824 ICC/IF Image

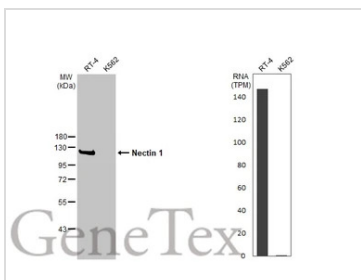
Nectin 1 antibody detects Nectin 1 protein at cell membrane by immunofluorescent analysis.

Sample: DIV9 rat E18 primary cortical neuron cells were fixed in 4% paraformaldehyde at RT for 15 min.

Green: Nectin 1 stained by Nectin 1 antibody (GTXTX130824) diluted at 1:250.

Red: Tau, an axon marker, stained by Tau antibody [GT287] (GTXTX634809) diluted at 1:500.

Blue: Fluoroshield with DAPI (GTXTX30920).



GTXTX130824 WB Image

Various whole cell extracts (30 µg) were separated by 10% SDS-PAGE, and the membrane was blotted with Nectin 1 antibody (GTXTX130824) diluted at 1:500. The HRP-conjugated anti-rabbit IgG antibody (GTXTX213110-01) was used to detect the primary antibody. Corresponding RNA expression data for the same cell lines are based on Human Protein Atlas program.

The observed M.W. is based on the publication: PMID: 12686612



For full product information, images and publications, please visit our [website](https://www.genetex.com).