

EPRS antibody

Cat. No. GTX130848

Host	Rabbit
Clonality	Polyclonal
Isotype	IgG
Applications	WB, IHC-P, IHC-Wm, IP
Reactivity	Human, Mouse, Rat, Drosophila

References (1)

★★★★★ Review (1)

Package

100 µl, 25 µl

Applications

Application Note

*Optimal dilutions/concentrations should be determined by the researcher.

Suggested dilution	Recommended dilution
WB	1:500-1:3000
IHC-P	1:100-1:1000
IHC-Wm	Assay dependent
IP	1:100-1:500

Not tested in other applications.

Calculated MW 171 kDa. ([Note](#))

Properties

Form	Liquid
Buffer	PBS, 20% Glycerol; 1% BSA
Preservative	0.025% ProClin 300
Storage	Store as concentrated solution. Centrifuge briefly prior to opening vial. For short-term storage (1-2 weeks), store at 4°C. For long-term storage, aliquot and store at -20°C or below. Avoid multiple freeze-thaw cycles.
Concentration	0.23 mg/ml (Please refer to the vial label for the specific concentration.)
Immunogen	Recombinant protein encompassing a sequence within the C-terminus region of human EPRS. The exact sequence is proprietary.
Purification	Purified by antigen-affinity chromatography.
Conjugation	Unconjugated



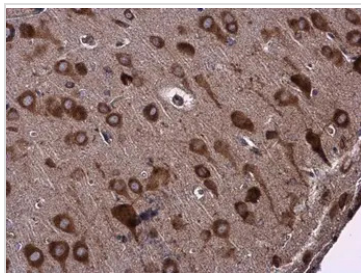
For full product information, images and publications, please visit our [website](#).

For laboratory research use only. Not for any clinical, therapeutic, or diagnostic use in humans or animals. Not for animal or human consumption.

Note

Purchasers shall not, and agree not to enable third parties to, analyze, copy, reverse engineer or otherwise attempt to determine the structure or sequence of the product.

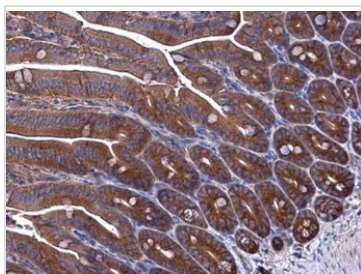
DATA IMAGES



GTX130848 IHC-P Image

EPRS antibody detects EPRS protein at cytoplasm in rat brain by immunohistochemical analysis.
 Sample: Paraffin-embedded rat brain.
 EPRS antibody (GTX130848) diluted at 1:500.

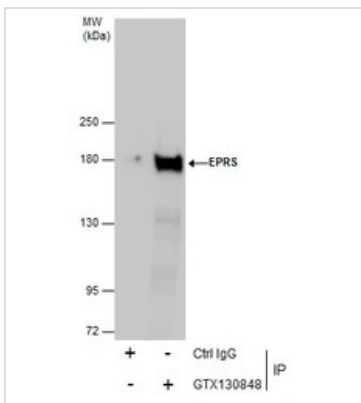
Antigen Retrieval: Citrate buffer, pH 6.0, 15 min



GTX130848 IHC-P Image

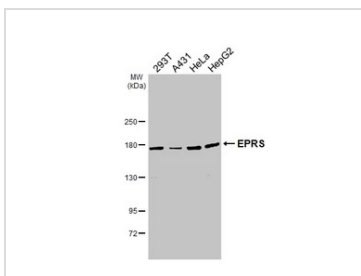
EPRS antibody detects EPRS protein at cytoplasm in mouse intestine by immunohistochemical analysis.
 Sample: Paraffin-embedded mouse intestine.
 EPRS antibody (GTX130848) diluted at 1:500.

Antigen Retrieval: Citrate buffer, pH 6.0, 15 min



GTX130848 IP Image

Immunoprecipitation of EPRS protein from 293T whole cell extracts using 5 µg of EPRS antibody (GTX130848).
 Western blot analysis was performed using EPRS antibody (GTX130848) diluted at 1:2500.
 EasyBlot anti-Rabbit IgG (GTX221666-01) was used as a secondary reagent.



GTX130848 WB Image

Various whole cell extracts (30 µg) were separated by 5% SDS-PAGE, and the membrane was blotted with EPRS antibody (GTX130848) diluted at 1:1000. The HRP-conjugated anti-rabbit IgG antibody (GTX213110-01) was used to detect the primary antibody.



For full product information, images and publications, please visit our [website](#).